



Benham & Reeves

Fulham Reach, Hammersmith, W6

£889 per week, £3,852 per month + fees

 2 Bedrooms  2 Bathrooms  Furnished

Luxurious apartment situated a popular Riverside development close to the amenities of Fulham and within walking distance from Hammersmith Underground Station (Circle District, piccadilly and Hammersmith and City Lines).

Please [click here](#) for full detail

Property features

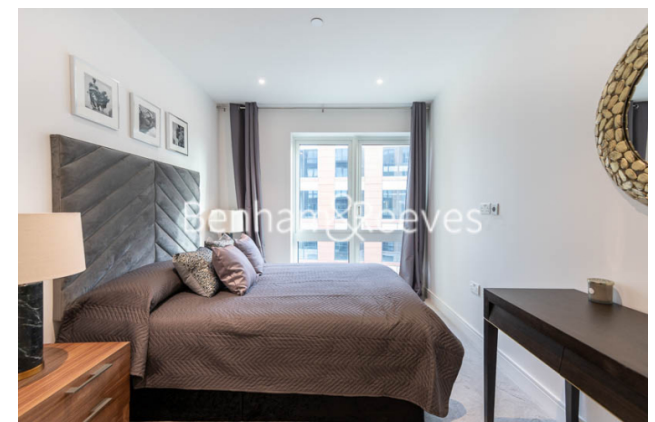
2 Bedroom 2 En Suite Bathroom | Balcony With River Views | Riverside Development | 24 Hour Concierge | Gym | EPC-B | Indoor Swimming Pool & Landscaped Podium Gardens | Air Conditioning & Under Floor Heating | Great transport Link Within The Area | Hammersmith Underground Station

For more information about this property,
please call our Hammersmith branch on

020 8600 0960

Redress & Client Money Protection :

Benham and Reeves are members of The Property Ombudsman redress scheme and have Client Money protection with ARLA Propertymark. You can find more information on our website at <https://www.benhamandreeves.com/membership/>



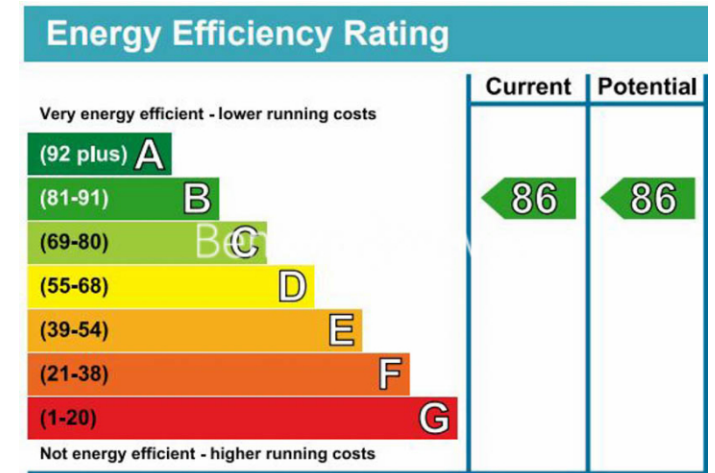
Benham & Reeves



Fulham Reach, Hammersmith, W6

£889 per week, £3,852 per month + fees

www.benhams.com



London branches open six days a week Mon - Sat

Canary Wharf | City | Colindale | Dartmouth Park | Ealing | Fulham
Hammersmith | Hampstead | Highgate | Hyde Park | Kensington | Kew
Knightsbridge | Nine Elms | Shoreditch | Southall | Surrey Quays
Wapping | Wembley | White City | Woolwich

International offices

China | Hong Kong SAR | India | Indonesia | Qatar | Malaysia | Middle East | Pakistan
Singapore | South Africa | Thailand | Turkey



Benham&Reeves