



Benham & Reeves

**Beadon Road, Hammersmith, W6**

£623 per week, £2,700 per month + fees

 1 Bedroom    1 Bathroom    Furnished

Spacious luxury 5th floor apartment, with air-conditioning, and contemporarily furnished, situated in a prestigious development in the heart of Hammersmith, within walking distance from Hammersmith Underground Station (Circle, District, Piccadilly and Hammersmith and City Lines). Offered fully furnished

Please [click here](#) for full detail

## Property features

**1 bedroom 1 bathroom, furnished flat | Wood Floor throughout | Comfort Cooling, Wall heating and Underfloor heating | Wall Mounted TV / Large Private Terrace | White Stone Finish Luxury Bathroom | EPC-B | 24 hr Concierge / Quality Residents' Gym | Long Hallway / Utility Room | Very Sizeable Open-Plan Reception with Hardwood Floors | Moments from Hammersmith Underground Station & Local Buses**

For more information about this property,  
please call our Hammersmith branch on

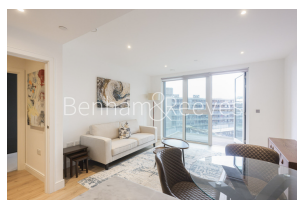
**020 8600 0960**

Redress & Client Money Protection :

Benham and Reeves are members of The Property Ombudsman redress scheme and have Client Money protection with ARLA Propertymark. You can find more information on our website at <https://www.benhamandreeves.com/membership/>



Benham & Reeves

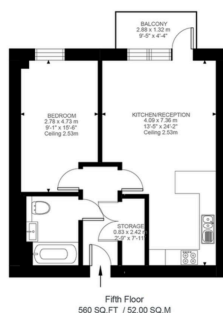


# Beadon Road, Hammersmith, W6

£623 per week, £2,700 per month + fees

www.benhams.com

APPROXIMATE GROSS INTERNAL (LIVING) AREA  
52.00 SQ.M / 560 SQ.FT



Score	Energy rating	Current	Potential
92+	A		
81-91	B	89 B	89 B
69-80	C		
55-68	D		
39-54	E		
21-38	F		
1-20	G		

## London branches open six days a week Mon - Sat

Canary Wharf | City | Colindale | Dartmouth Park | Ealing | Fulham  
Hammersmith | Hampstead | Highgate | Hyde Park | Kensington | Kew  
Knightsbridge | Nine Elms | Shoreditch | Southall | Surrey Quays  
Wapping | Wembley | White City | Woolwich

## International offices

China | Hong Kong SAR | India | Indonesia | Qatar | Malaysia | Middle East | Pakistan  
Singapore | South Africa | Thailand | Turkey



Benham & Reeves