



Benham & Reeves

Everington Street, Hammersmith, W6

£1,085 per week, £4,702 per month + fees

 4 Bedrooms  2 Bathrooms  Unfurnished

Luxury, newly renovated large family house with private garden situated on Everington Street Hammersmith and Fulham available NOW.

Please [click here](#) for full detail

Property features

4 Double Bedroom Unfurnished Split Level House | Luxurious 2 x Bathrooms | Private Garden | Newly Refurbished | Spacious Reception Room with Separate Dining Area | EPC-TBC | Fully Fitted Eat-In Kitchen Integrated with Appliances | Underfloor Heating | The house is arranged over three floors | Moments from Hammersmith and Fulham Riverbank

For more information about this property,
please call our Hammersmith branch on

020 8600 0960

Redress & Client Money Protection :

Benham and Reeves are members of The Property Ombudsman redress scheme and have Client Money protection with ARLA Propertymark. You can find more information on our website at <https://www.benhams.com/membership/>



Benham & Reeves



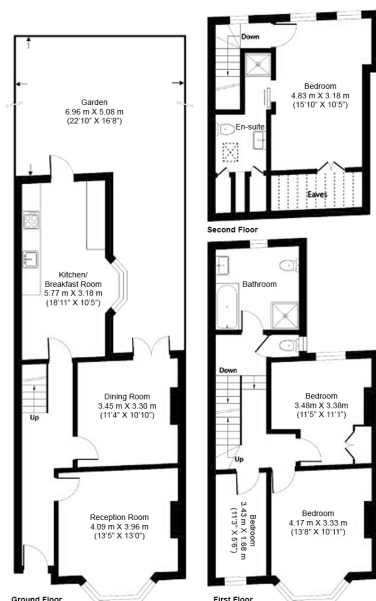
Everington Street, Hammersmith, W6

£1,085 per week, £4,702 per month + fees

www.benhams.com

Total Gross Internal Area

131.7 Sq/m - 1,418 Sq/ft



Floor Plan measurements are approximate and are for illustrative purposes only. While we do not doubt the floor plans accuracy, we make no guarantee, warranty or representation as to the accuracy and completeness of the floor plan.

London branches open six days a week Mon - Sat

Canary Wharf | City | Colindale | Dartmouth Park | Ealing | Fulham
Hammersmith | Hampstead | Highgate | Hyde Park | Kensington | Kew
Knightsbridge | Nine Elms | Shoreditch | Southall | Surrey Quays
Wapping | Wembley | White City | Woolwich

International offices

China | Hong Kong SAR | India | Israel | Malaysia | Middle East | Pakistan
Qatar | Singapore | South Africa | Thailand | Turkey



Benham & Reeves