



Benham & Reeves

Beadon Road, Hammersmith, W6

£635 per week, £2,752 per month + fees

 1 Bedroom  1 Bathroom  Furnished

Luxury, air-conditioned 5th floor apartment set in a prestigious development in the heart of Hammersmith. Ideally located within walking distance from Hammersmith underground station (Circle, District, Piccadilly and Hammersmith and City lines).

Please [click here](#) for full detail

Property features

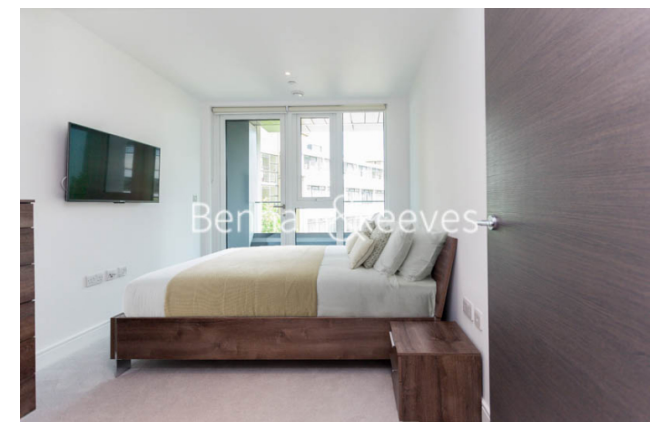
1 bedroom 1 bathroom, furnished flat located | Wood Floor throughout | Comfort Cooling, Wall heating and Underfloor heating | Wall Mounted TV / Large Private Terrace | Cream Stone Finish Luxury Bathroom | EPC-B | 24 hr Concierge / Quality Residents' Gym | Long Hallway / Utility Room | Very Sizeable Open-Plan Reception with Hardwood Floors | Moments from Hammersmith Underground Station & Local Buses

For more information about this property,
please call our Hammersmith branch on

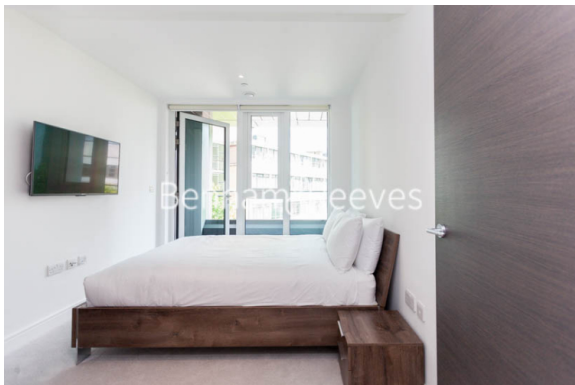
020 8600 0960

Redress & Client Money Protection :

Benham and Reeves are members of The Property Ombudsman redress scheme and have Client Money protection with ARLA Propertymark. You can find more information on our website at <https://www.benhams.com/membership/>



Benham&Reeves



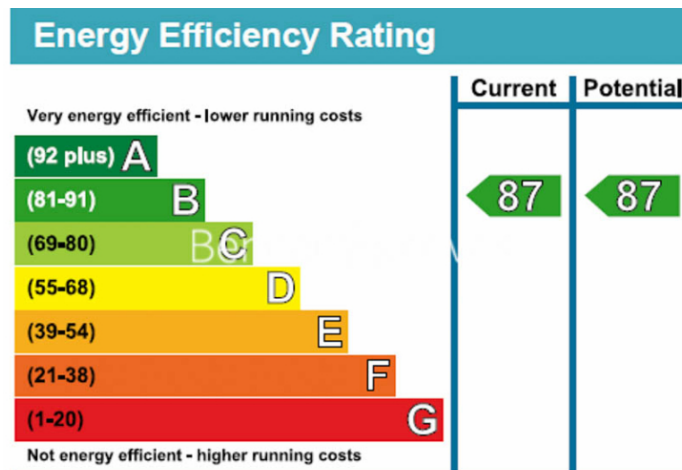
Beadon Road, Hammersmith, W6

£635 per week, £2,752 per month + fees

www.benhams.com



Floor Plan measurements are approximate and are for illustrative purposes only. While we do not doubt the floor plans accuracy, we make no guarantee, warranty or representation as to the accuracy and completeness of the floor plan.



London branches open six days a week Mon - Sat

Canary Wharf | City | Colindale | Dartmouth Park | Ealing | Fulham
Hammersmith | Hampstead | Highgate | Hyde Park | Kensington | Kew
Knightsbridge | Nine Elms | Shoreditch | Southall | Surrey Quays
Wapping | Wembley | White City | Woolwich

International offices

China | Hong Kong SAR | India | Indonesia | Qatar | Malaysia | Middle East | Pakistan
Singapore | South Africa | Thailand | Turkey



Benham & Reeves