



Benham & Reeves

Parr's Way, Hammersmith, W6

£900 per week, £3,900 per month + fees

 2 Bedrooms  2 Bathrooms 
Furnished/UnFurnished

Luxury, elite 7th floor apartment set in a prestigious development with an array of resident facilities, in the heart of Hammersmith. Perfectly positioned for Hammersmith Tube station (Circle, District, Piccadilly and Hammersmith and City lines).

Please [click here](#) for full detail

Property features

2 bedroom 2 bathroom ELITE flat located on the 7th floor | Furnished | Wooden flooring and carpet in all bedrooms | Italian marble throughout in all bathrooms | MIELE integrated kitchen appliances with breakfast bar | EPC-B | Ample storage and large wardrobe in both bedrooms | Underground parking included | 24 hours CCTV and concierge service | 5 min walk to Hammersmith tube station

For more information about this property,
please call our Hammersmith branch on

020 8600 0960

Redress & Client Money Protection :

Benham and Reeves are members of The Property Ombudsman redress scheme and have Client Money protection with ARLA Propertymark. You can find more information on our website at <https://www.benhamandreeves.com/membership/>



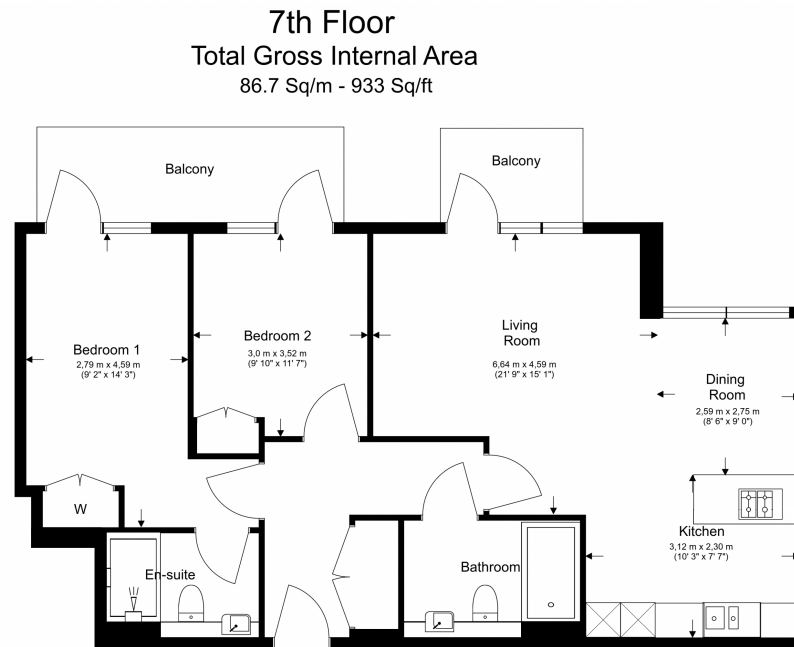
Benham & Reeves



Parr's Way, Hammersmith, W6

£900 per week, £3,900 per month + fees

www.benhams.com



Floor Plan measurements are approximate and are for illustrative purposes only. While we do not doubt the floor plans accuracy, we make no guarantee, warranty or representation as to the accuracy and completeness of the floor plan.

London branches open six days a week Mon - Sat

Canary Wharf | City | Colindale | Dartmouth Park | Ealing | Fulham
Hammersmith | Hampstead | Highgate | Hyde Park | Kensington | Kew
Knightsbridge | Nine Elms | Shoreditch | Southall | Surrey Quays
Wapping | Wembley | White City | Woolwich

International offices

China | Hong Kong SAR | India | Indonesia | Qatar | Malaysia | Middle East | Pakistan
Singapore | South Africa | Thailand | Turkey



Benham & Reeves