



Benham & Reeves

## **Fulham Reach, Hammersmith, W6**

£911 per week, £3,949 per month + fees

 2 Bedrooms    2 Bathrooms    Furnished

#### PARKING INCLUDED

A bright and spacious 5th floor apartment situated in a sought-after riverside development, with a host of onsite amenities, moments from the amenities of Hammersmith. Ideally located within walking distance from Hammersmith Underground station (Circle, District, Piccadilly, and Hammersmith & City lines)

Please [click here](#) for full detail

### Property features

**Spacious Two Double Bedrooms with Built-In Wardrobes | Stylish Fully Fitted Kitchen Featuring Premium Integrated Ap | Generous Double Reception Room with Dedicated Dining Area | Elegantly Furnished for Immediate Comfort and Convenience | Three Private Balconies and Access to World-Class Resident A | EPC-B | Secure Underground Parking Included | 24-hour concierge, 24-hour security, and landscaped communal | Air Ventilation / Underfloor Heating / Air Conditioning | Prime Location: moments from Hammersmith Underground Statio**

For more information about this property,  
please call our Hammersmith branch on

**020 8600 0960**

Redress & Client Money Protection :

Benham and Reeves are members of The Property Ombudsman redress scheme and have Client Money protection with ARLA Propertymark. You can find more information on our website at <https://www.benhamandreeves.com/membership/>



Benham&Reeves

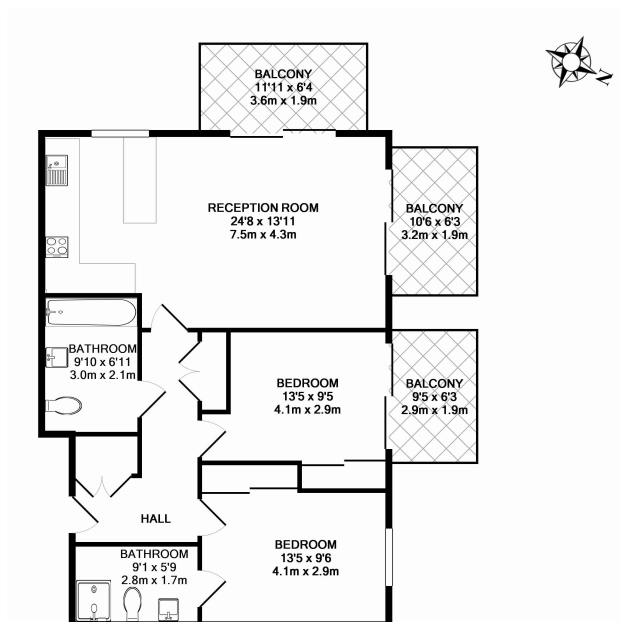




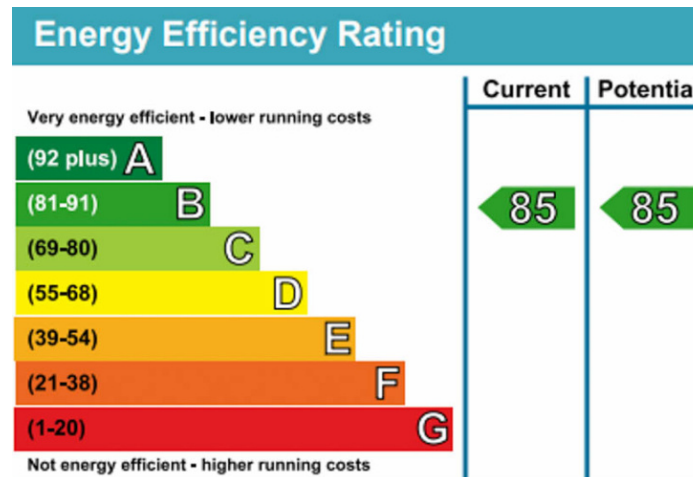
# Fulham Reach, Hammersmith, W6

£911 per week, £3,949 per month + fees

www.benhams.com



00237-22BH.FR.W6 - 2ND FLOOR  
TOTAL APPROX. FLOOR AREA 829 SQ.FT. (77.0 SQ.M.)  
Whilst every attempt has been made to ensure the accuracy of the floor plan contained here, measurements of doors, windows, rooms and any other items are approximate and no responsibility is taken for any error, omission, or mis-statement. This plan is for illustrative purposes only and should be used as such by any prospective purchaser. The services, systems and appliances shown have not been tested and no guarantee as to their operability or efficiency can be given  
Made with Metropix ©2015



## London branches open six days a week Mon - Sat

Canary Wharf | City | Colindale | Dartmouth Park | Ealing | Fulham  
Hammersmith | Hampstead | Highgate | Hyde Park | Kensington | Kew  
Knightsbridge | Nine Elms | Shoreditch | Southall | Surrey Quays  
Wapping | Wembley | White City | Woolwich

## International offices

China | Hong Kong SAR | India | Indonesia | Qatar | Malaysia | Middle East | Pakistan  
Singapore | South Africa | Thailand | Turkey



Benham & Reeves