



Benham&Reeves

Palace Wharf, Hammersmith, W6

£765 per week, £3,315 per month + fees

 1 Bedroom  1 Bathroom  Furnished

An immaculate, interior designed ground floor apartment situated within a converted warehouse style, gated development on the River Thames., conveniently close to Hammersmith Overground and Underground Stations

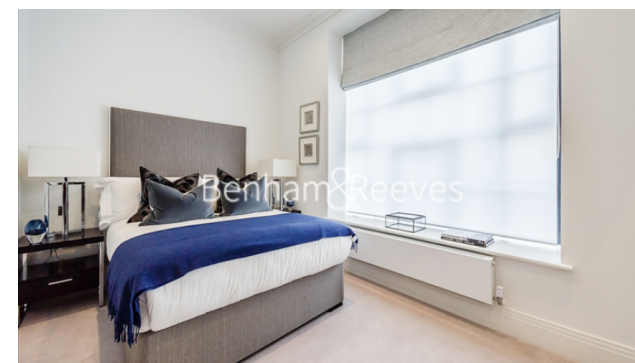
Please [click here](#) for full detail

Property features

1 Bedroom | 1 Bathroom | Reception | Furnished | Fitted Kitchen | EPC-D | Riverside Location | Outside Space | Nearby Hammersmith Overground and Barons Court

For more information about this property,
please call our Hammersmith branch on

020 8600 0960



Redress & Client Money Protection :

Benham and Reeves are members of The Property Ombudsman redress scheme and have Client Money protection with ARLA Propertymark. You can find more information on our website at <https://www.benhamandreeves.com/membership/>

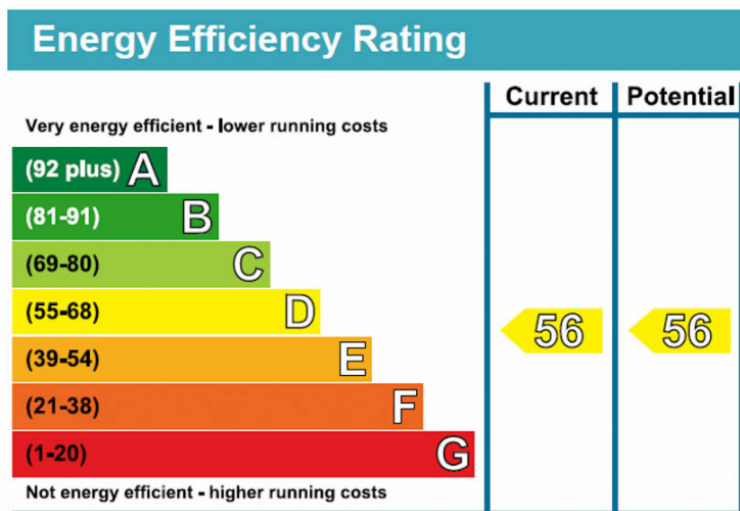
Benham & Reeves



Palace Wharf, Hammersmith, W6

£765 per week, £3,315 per month + fees

www.benhams.com



London branches open six days a week Mon - Sat

Canary Wharf | City | Colindale | Dartmouth Park | Ealing | Fulham
Hammersmith | Hampstead | Highgate | Hyde Park | Kensington | Kew
Knightsbridge | Nine Elms | Shoreditch | Southall | Surrey Quays
Wapping | Wembley | White City | Woolwich

International offices

China | Hong Kong SAR | India | Indonesia | Qatar | Malaysia | Middle East |
Singapore | South Africa | Thailand | Turkey

