



Benham & Reeves

Fulham Reach, Hammersmith, W6

£808 per week, £3,500 per month + fees

 2 Bedrooms  2 Bathrooms  Furnished

A spacious and contemporary apartment situated within a sought-after riverside development with a host of luxury residents amenities in located within walking distance from Hammersmith underground station (Circle, District, Piccadilly, and Hammersmith and City lines).

Please [click here](#) for full detail

Property features

Two Bedrooms | Two Bathrooms | Reception | Furnished | Fitted Kitchen | EPC-B | Wood Floors | Gym, Swimming Pool and Spa | Nearby Hammersmith Tube Station

For more information about this property, please call our Hammersmith branch on

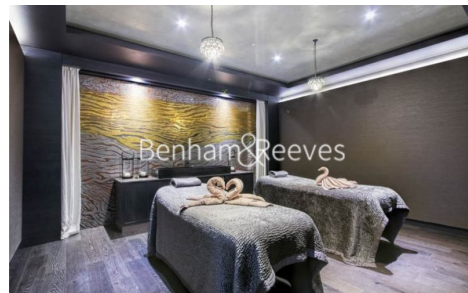
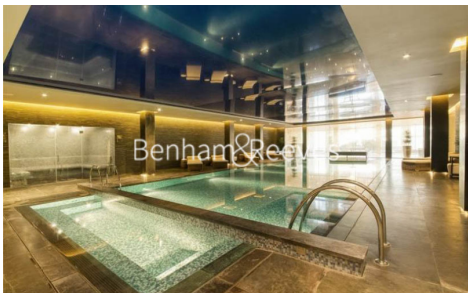
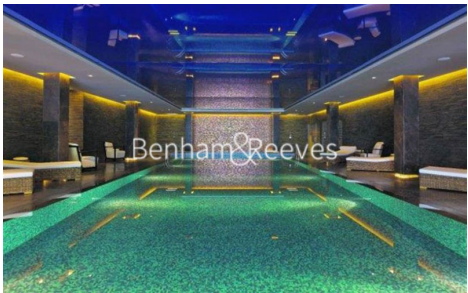
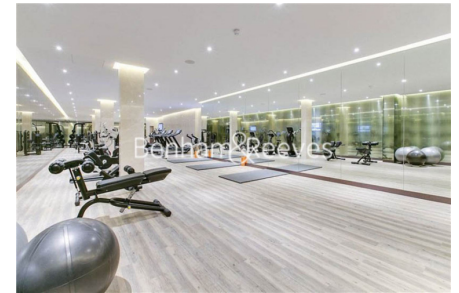
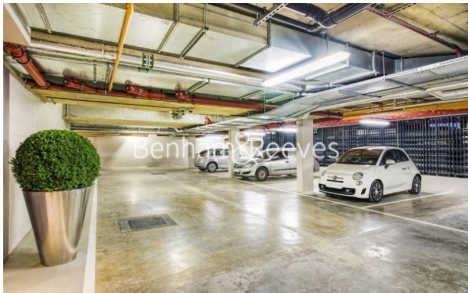
020 8600 0960

Redress & Client Money Protection :

Benham and Reeves are members of The Property Ombudsman redress scheme and have Client Money protection with ARLA Propertymark. You can find more information on our website at <https://www.benhamandreeves.com/membership/>



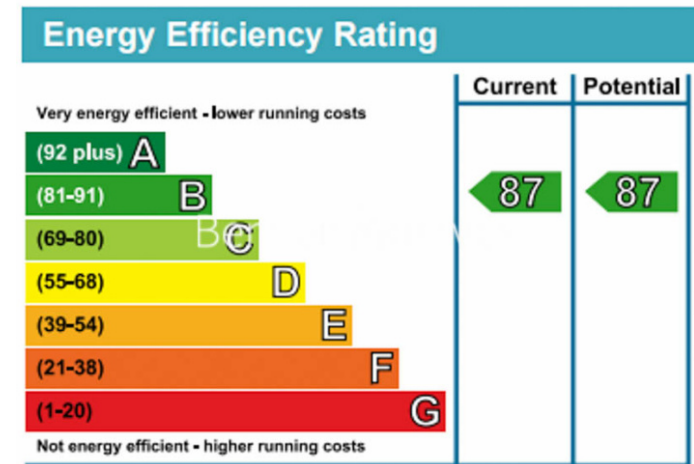
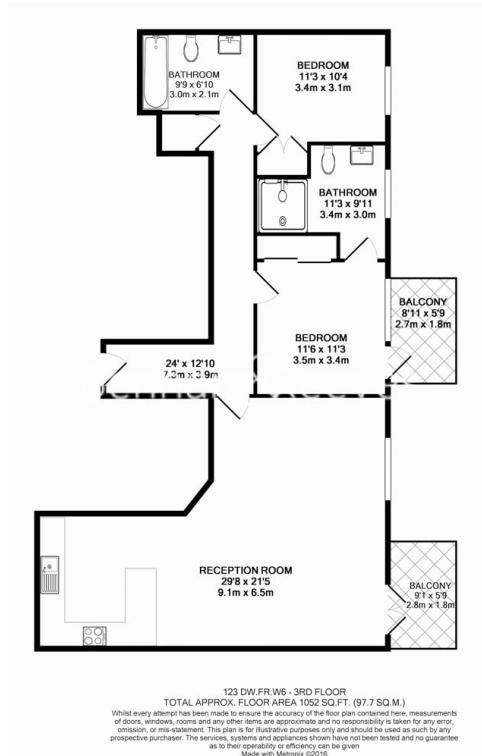
Benham & Reeves



Fulham Reach, Hammersmith, W6

£808 per week, £3,500 per month + fees

www.benhams.com



London branches open six days a week Mon - Sat

Canary Wharf | City | Colindale | Dartmouth Park | Ealing | Fulham
Hammersmith | Hampstead | Highgate | Hyde Park | Kensington | Kew
Knightsbridge | Nine Elms | Shoreditch | Southall | Surrey Quays
Wapping | Wembley | White City | Woolwich

International offices

China | Hong Kong SAR | India | Indonesia | Qatar | Malaysia | Middle East | Pakistan
Singapore | South Africa | Thailand | Turkey



Benham & Reeves