



Benham & Reeves

Queens Wharf, Hammersmith, W6

£923 per week, £4,000 per month + fees

 2 Bedrooms  2 Bathrooms  Furnished

Well-presented, air-conditioned 4th floor apartment, with views over the communal gardens, situated in a sought after development a two minute walk from Hammersmith Station (District, Piccadilly, and Hammersmith & City lines. EPC-B

Please [click here](#) for full detail

Property features

2 Bedrooms | 2 Bathrooms | Reception | Furnished | Fitted Kitchen | EPC-B | 24 Hour Concierge | Close to Amenities | Nearby Hammersmith Underground Station

For more information about this property,
please call our Hammersmith branch on

020 8600 0960

Redress & Client Money Protection :

Benham and Reeves are members of The Property Ombudsman redress scheme and have Client Money protection with ARLA Propertymark. You can find more information on our website at <https://www.benhamandreeves.com/membership/>



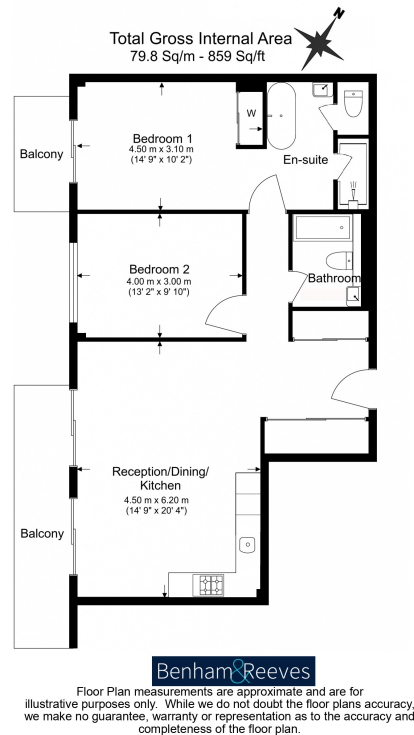
Benham & Reeves



Queens Wharf, Hammersmith, W6

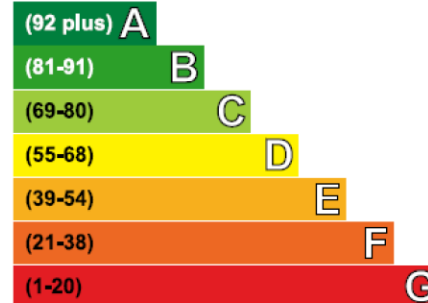
£923 per week, £4,000 per month + fees

www.benhams.com



Energy Efficiency Rating

Very energy efficient - lower running costs



Not energy efficient - higher running costs

Current	Potential
86	86

London branches open six days a week Mon - Sat

Canary Wharf | City | Colindale | Dartmouth Park | Ealing | Fulham
Hammersmith | Hampstead | Highgate | Hyde Park | Kensington | Kew
Knightsbridge | Nine Elms | Shoreditch | Southall | Surrey Quays
Wapping | Wembley | White City | Woolwich

International offices

China | Hong Kong SAR | India | Indonesia | Qatar | Malaysia | Middle East |
Singapore | South Africa | Thailand | Turkey



Benham & Reeves