



Benham&Reeves

## **Regatta Lane, Hammersmith, W6**

£819 per week, £3,550 per month + fees

🛏️ 2 Bedrooms    🚿 2 Bathrooms    🛋️ Furnished

Modern 4th floor apartment with direct River views situated in a landmark Riverside development, a short walk from Imperial Wharf Station.

Please [click here](#) for full detail

## Property features

**2 Bedrooms | 2 Bathrooms | Reception | Furnished | Fitted Kitchen | EPC-B | Gym and Spa | Private Members' Club | Nearby Hammersmith Tube Station**

For more information about this property,  
please call our Hammersmith branch on

**020 8600 0960**

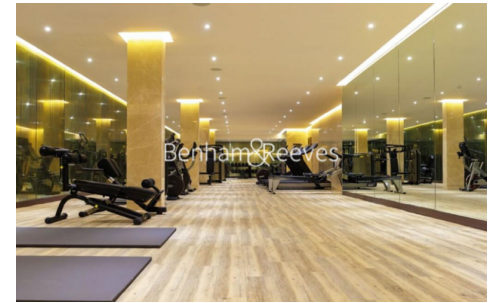
Redress & Client Money Protection :

Benham and Reeves are members of The Property Ombudsman redress scheme and have Client Money protection with ARLA Propertymark. You can find more information on our website at <https://www.benhamandreeves.com/membership/>



Benham&Reeves

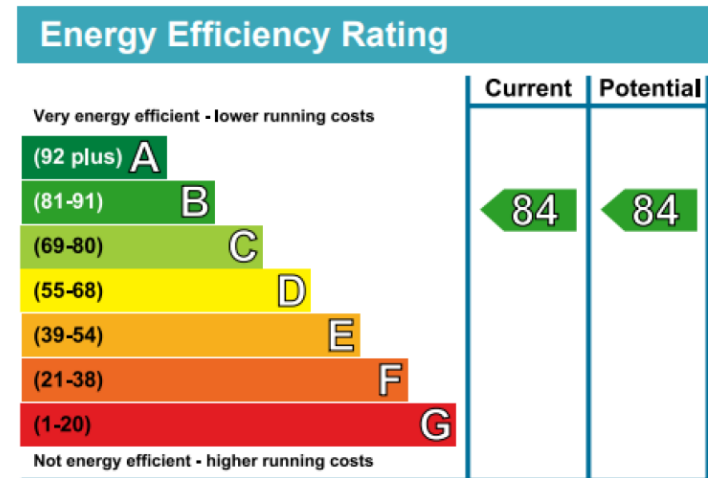
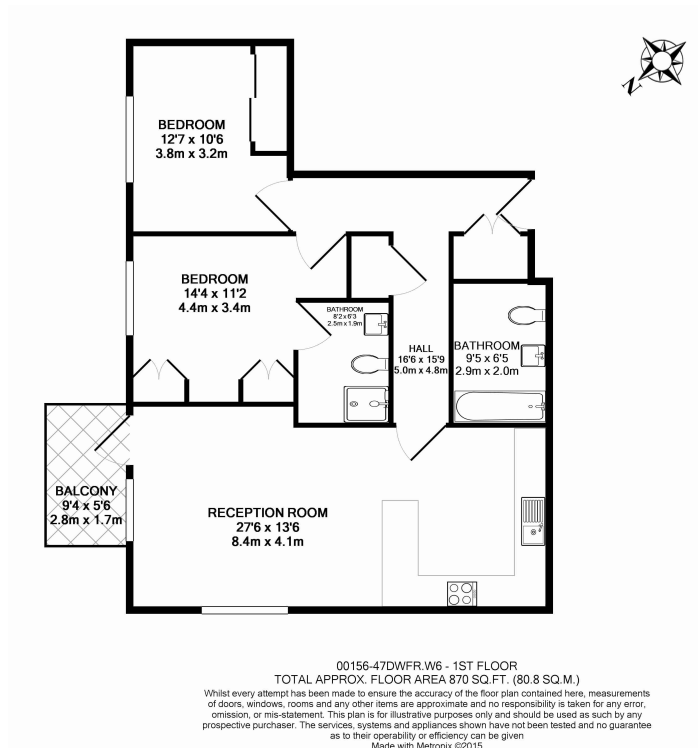




# Regatta Lane, Hammersmith, W6

£819 per week, £3,550 per month + fees

www.benhams.com



## London branches open six days a week Mon - Sat

Canary Wharf | City | Colindale | Dartmouth Park | Ealing | Fulham  
Hammersmith | Hampstead | Highgate | Hyde Park | Kensington | Kew  
Knightsbridge | Nine Elms | Shoreditch | Southall | Surrey Quays  
Wapping | Wembley | White City | Woolwich

## International offices

China | Hong Kong SAR | India | Indonesia | Qatar | Malaysia | Middle East | Pakistan  
Singapore | South Africa | Thailand | Turkey



Benham & Reeves