



Benham&Reeves

## **Brunswick House, Hammersmith, W6**

£923 per week, £4,000 per month + fees

 2 Bedrooms    2 Bathrooms    Furnished

A contemporary and bright second floor apartment set in Fulham Reach with excellent onsite amenities and three private balconies. Located within walking distance from Hammersmith Underground station.

Please [click here](#) for full detail

## Property features

**Two Bedrooms | Two Bathrooms | Reception | Furnished | Fitted Kitchen | EPC-C | Close to Amenities | 24 hour security and Concierge Service | Nearby Hammersmith Station (0.5miles)**

For more information about this property,  
please call our Hammersmith branch on

**020 8600 0960**

Redress & Client Money Protection :

Benham and Reeves are members of The Property Ombudsman redress scheme and have Client Money protection with ARLA Propertymark. You can find more information on our website at <https://www.benhamandreeves.com/membership/>



Benham & Reeves

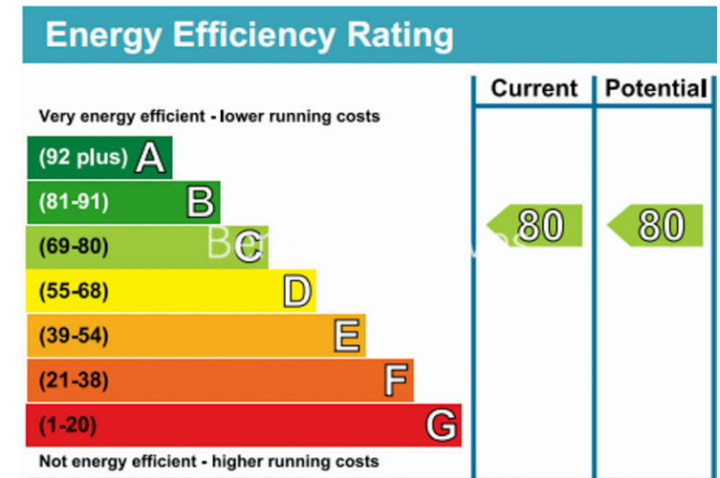
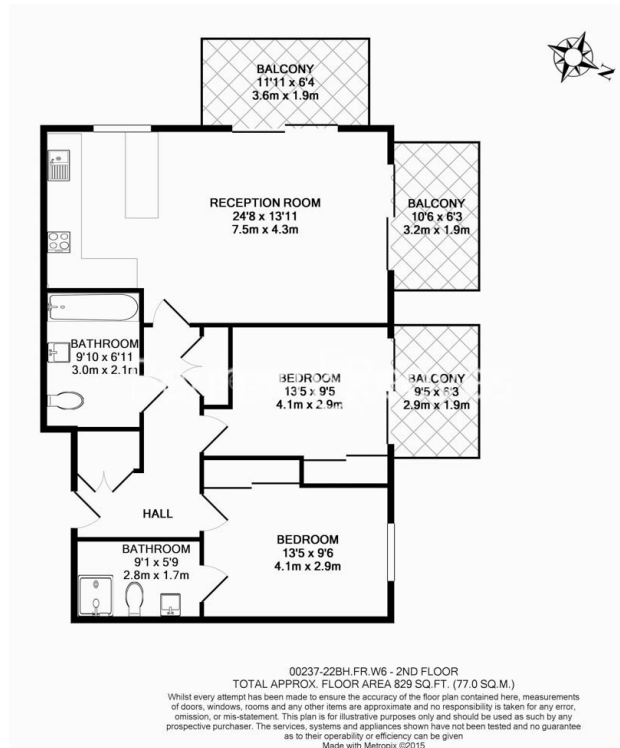




# Brunswick House, Hammersmith, W6

£923 per week, £4,000 per month + fees

www.benhams.com



## London branches open six days a week Mon - Sat

Canary Wharf | City | Colindale | Dartmouth Park | Ealing | Fulham  
Hammersmith | Hampstead | Highgate | Hyde Park | Kensington | Kew  
Knightsbridge | Nine Elms | Shoreditch | Southall | Surrey Quays  
Wapping | Wembley | White City | Woolwich

## International offices

China | Hong Kong SAR | India | Indonesia | Qatar | Malaysia | Middle East | Pakistan  
Singapore | South Africa | Thailand | Turkey



Benham & Reeves