



Benham & Reeves

Glenthorne Road, Hammersmith, W6

£923 per week, £4,000 per month + fees

 2 Bedrooms  2 Bathrooms  Furnished

Luxury Living in the Heart of Hammersmith – Elegant Apartment in Sovereign Court. Nestled on the first floor of the distinguished Lancaster House within the coveted Sovereign Court development, this stunning apartment offers a rare blend of sophistication, comfort, and contemporary style in the vibrant heart of Hammersmith

Please [click here](#) for full detail

Property features

2 Double Bedroom with Built-in Wardrobes | Luxury Bathrooms Features with High Quality Designs | Fully Fitted Open Plan Kitchen with Well Know Appliances | 24 Hour Concierge with High Standard Service and Security | Abundance of Storage | EPC-B | Furnished /LED Spotlights /Sizable Private Balcony | Air Ventilation / Underfloor Heating / Air Conditioning | Close to Local Amenities | Nearby Hammersmith Underground Station

For more information about this property,
please call our Hammersmith branch on

020 8600 0960

Redress & Client Money Protection :

Benham and Reeves are members of The Property Ombudsman redress scheme and have Client Money protection with ARLA Propertymark. You can find more information on our website at <https://www.benhamandreeves.com/membership/>



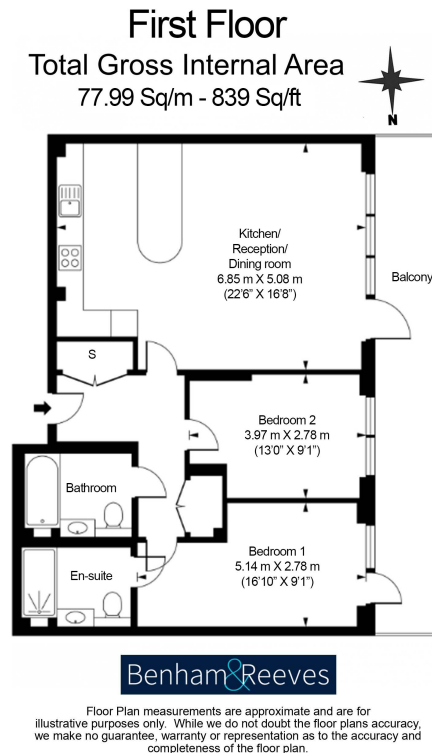
Benham&Reeves



Glenthorne Road, Hammersmith, W6

£923 per week, £4,000 per month + fees

www.benhams.com



London branches open six days a week Mon - Sat

Canary Wharf | City | Colindale | Dartmouth Park | Ealing | Fulham
Hammersmith | Hampstead | Highgate | Hyde Park | Kensington | Kew
Knightsbridge | Nine Elms | Shoreditch | Southall | Surrey Quays
Wapping | Wembley | White City | Woolwich

International offices

China | Hong Kong SAR | India | Indonesia | Qatar | Malaysia | Middle East | Pakistan
Singapore | South Africa | Thailand | Turkey



Benham & Reeves