



Benham & Reeves

Merrivale Terrace, Hammersmith, W6

£669 per week, £2,900 per month + fees

 1 Bedroom  1 Bathroom  Furnished

A modern ground floor 1 bedroom furnished apartment, with excellent onsite resident facilities, situated in a riverside development close to the amenities of Hammersmith. Located within walking distance from Hammersmith underground station, (Piccadilly, Circle, District and Hammersmith and City line).

Please [click here](#) for full detail

Property features

1 Double Bedroom with Built-in Wardrobes | Very Bright & Spacious Reception Room | Furnished new flat | Free access to amenities including swimming pool and gym | Luxury Bathroom | EPC-TBC | Designable Fully Fitted Open Plan Kitchen with Well-Known Ap | Multi-channel Underfloor Heating / Air Ventilation System | 24 Hour Concierge with high standard service and security | Nearby Hammersmith Underground Station

For more information about this property,
please call our Hammersmith branch on

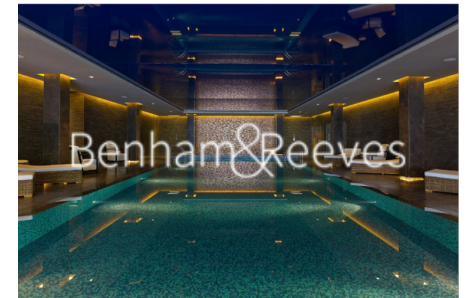
020 8600 0960

Redress & Client Money Protection :

Benham and Reeves are members of The Property Ombudsman redress scheme and have Client Money protection with ARLA Propertymark. You can find more information on our website at <https://www.benhams.com/membership/>



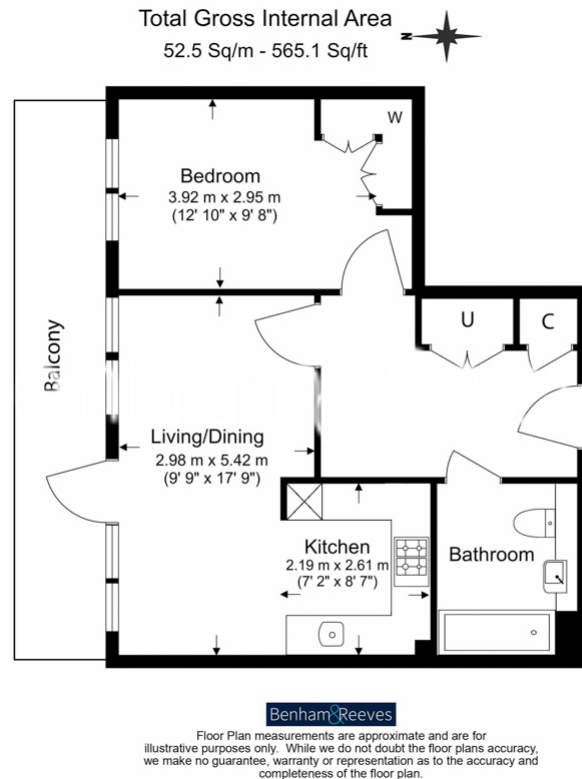
Benham & Reeves



Merrivale Terrace, Hammersmith, W6

£669 per week, £2,900 per month + fees

www.benhams.com



London branches open six days a week Mon - Sat

Canary Wharf | City | Colindale | Dartmouth Park | Ealing | Fulham
Hammersmith | Hampstead | Highgate | Hyde Park | Kensington | Kew
Knightsbridge | Nine Elms | Shoreditch | Southall | Surrey Quays
Wapping | Wembley | White City | Woolwich

International offices

China | Hong Kong SAR | India | Indonesia | Qatar | Malaysia | Middle East | Pakistan
Singapore | South Africa | Thailand | Turkey



Benham & Reeves