



Benham & Reeves

Faulkner House, Hammersmith, W6

£692 per week, £3,000 per month + fees

 1 Bedroom  1 Bathroom  Furnished

A stylish ground floor apartment, with air-conditioning and underfloor heating, situated in a prestigious riverside development. Ideally located 5 minutes from Hammersmith Broadway and Underground Station (District, Circle, Piccadilly & Hammersmith & City lines), offering luxury living with excellent transport links.

Please [click here](#) for full detail

Property features

Exceptional One-Bedroom Apartment | Air Ventilation / Underfloor Heating / Air Conditioning | Beautifully designed interiors with Open Plan Kitchen | Luxury Bathroom Features with White Marble Pearl Finish | 24 hour concierge / 24 hours security | EPC-B | Sought-after Fulham Reach riverside development | Gym, Golf simulator, Snooker room, Swimming pool, sauna | Gated bicycle storage | Step-away from Hammersmith Station

For more information about this property, please call our Hammersmith branch on

020 8600 0960

Redress & Client Money Protection :

Benham and Reeves are members of The Property Ombudsman redress scheme and have Client Money protection with ARLA Propertymark. You can find more information on our website at <https://www.benhams.com/membership/>



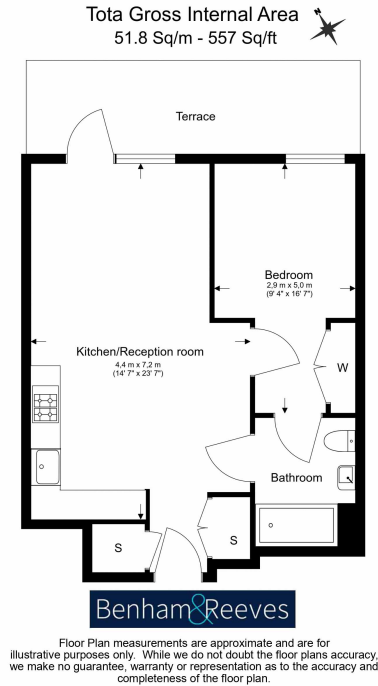
Benham & Reeves



Faulkner House, Hammersmith, W6

£692 per week, £3,000 per month + fees

www.benhams.com



Score	Energy rating	Current	Potential
92+	A		
81-91	B	83 B	83 B
69-80	C		
55-68	D		
39-54	E		
21-38	F		
1-20	G		

London branches open six days a week Mon - Sat

Canary Wharf | City | Colindale | Dartmouth Park | Ealing | Fulham
Hammersmith | Hampstead | Highgate | Hyde Park | Kensington | Kew
Knightsbridge | Nine Elms | Shoreditch | Southall | Surrey Quays
Wapping | Wembley | White City | Woolwich

International offices

China | Hong Kong SAR | India | Indonesia | Qatar | Malaysia | Middle East |
Singapore | South Africa | Thailand | Turkey

