



Benham & Reeves

Glenthorne Road, Hammersmith, W6

£725 per week, £3,142 per month + fees

 2 Bedrooms  2 Bathrooms  Furnished

A spacious, air-conditioned, luxury 4th floor apartment, with quality residents' gym, is situated in a prestigious development in the heart of Hammersmith. Ideally located within walking distance from Hammersmith Underground Station (Circle, District, Piccadilly and Hammersmith and City Lines).

Please [click here](#) for full detail

Property features

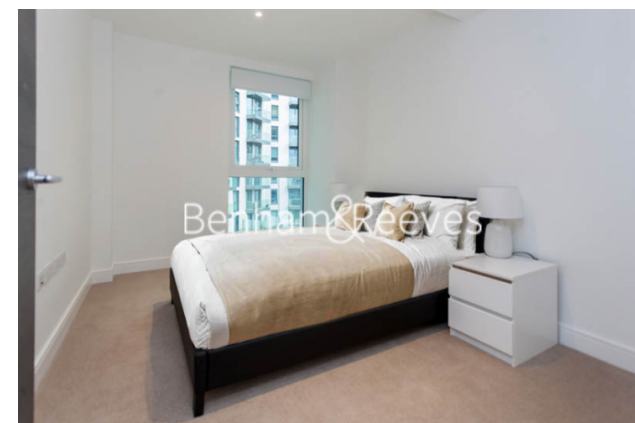
2 bedroom 2 bathroom, furnished flat located | Wood Floor throughout | Comfort Cooling, Wall heating and Underfloor heating | Wall Mounted TV / Large Private Terrace | 2 x Cream Stone Finish Luxury Bathroom | EPC-B | Contemporary Open-Plan Fitted Kitchen | 24 hr Concierge / Quality Residents' Gym | Very Sizeable Open-Plan Reception with Hardwood Floors | Moments from Hammersmith Underground Station & Local Buses

For more information about this property,
please call our Hammersmith branch on

020 8600 0960

Redress & Client Money Protection :

Benham and Reeves are members of The Property Ombudsman redress scheme and have Client Money protection with ARLA Propertymark. You can find more information on our website at <https://www.benhamandreeves.com/membership/>



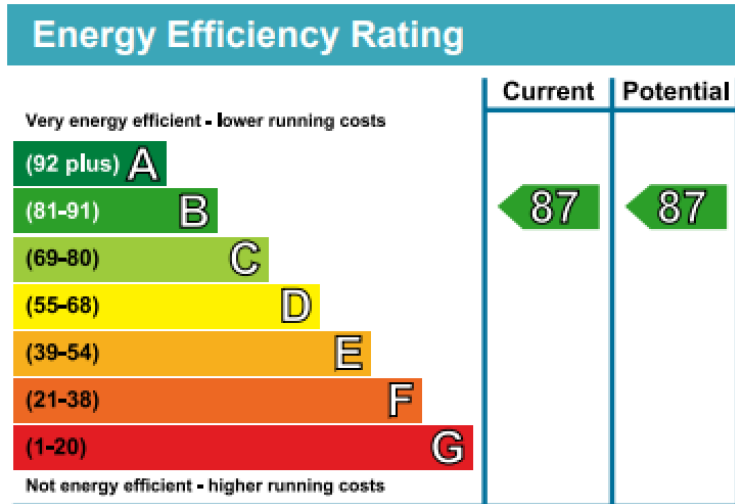
Benham & Reeves



Glenthorne Road, Hammersmith, W6

£725 per week, £3,142 per month + fees

www.benhams.com



London branches open six days a week Mon - Sat

Canary Wharf | City | Colindale | Dartmouth Park | Ealing | Fulham
Hammersmith | Hampstead | Highgate | Hyde Park | Kensington | Kew
Knightsbridge | Nine Elms | Shoreditch | Southall | Surrey Quays
Wapping | Wembley | White City | Woolwich

International offices

China | Hong Kong SAR | India | Indonesia | Qatar | Malaysia | Middle East |
Singapore | South Africa | Thailand | Turkey

