



Benham & Reeves

Sovereign Court, Hammersmith, W6

£831 per week, £3,600 per month + fees

 2 Bedrooms  2 Bathrooms  Furnished

A super stylish 2nd floor apartment situated in a prestigious luxury development in Hammersmith, one of West London's best-connected locations. A mere 150 metres from Hammersmith Station.

Please [click here](#) for full detail

Property features

2 Bedrooms | 2 Bathrooms | Reception | Furnished | Fitted Kitchen | EPC-B | Private Balcony and Communal Gardens | Nearby local amenities | Nearby Hammersmith tube station

For more information about this property,
please call our Hammersmith branch on

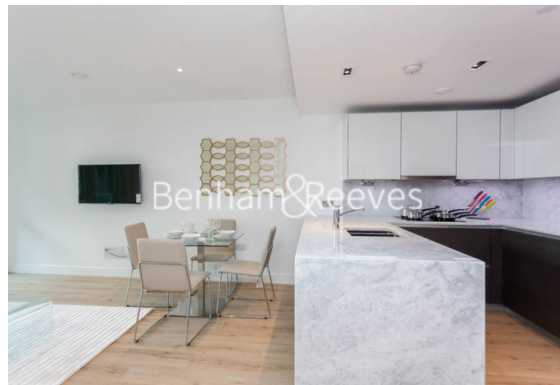
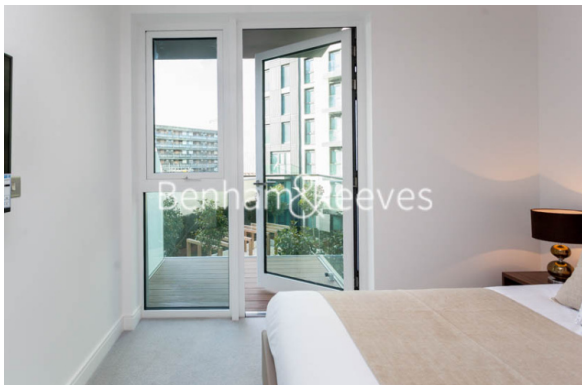
020 8600 0960

Redress & Client Money Protection :

Benham and Reeves are members of The Property Ombudsman redress scheme and have Client Money protection with ARLA Propertymark. You can find more information on our website at <https://www.benhamandreeves.com/membership/>



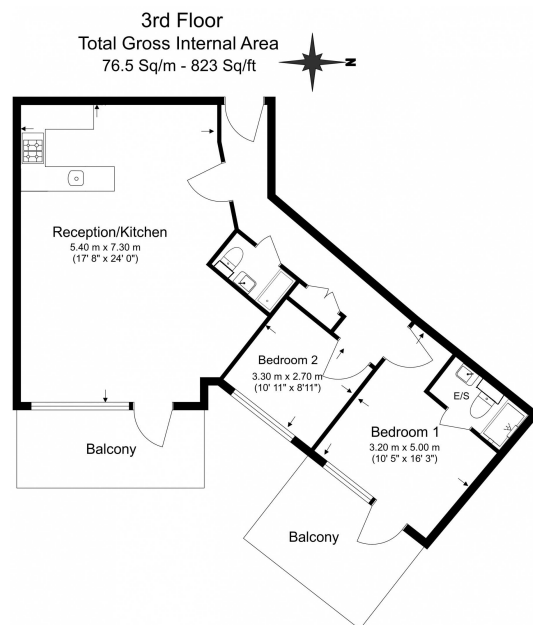
Benham & Reeves



Sovereign Court, Hammersmith, W6

£831 per week, £3,600 per month + fees

www.benhams.com

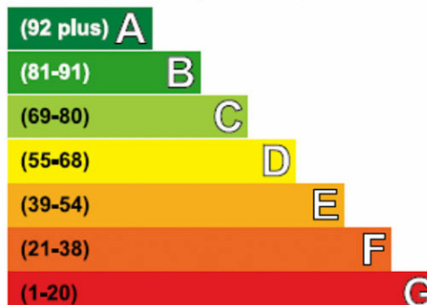


Benham & Reeves

Floor Plan measurements are approximate and are for illustrative purposes only. While we do not doubt the floor plans accuracy, we make no guarantee, warranty or representation as to the accuracy and completeness of the floor plan.

Energy Efficiency Rating

Very energy efficient - lower running costs



Not energy efficient - higher running costs

Current	Potential
88	88

London branches open six days a week Mon - Sat

Canary Wharf | City | Colindale | Dartmouth Park | Ealing | Fulham
Hammersmith | Hampstead | Highgate | Hyde Park | Kensington | Kew
Knightsbridge | Nine Elms | Shoreditch | Southall | Surrey Quays
Wapping | Wembley | White City | Woolwich

International offices

China | Hong Kong SAR | India | Indonesia | Qatar | Malaysia | Middle East |
Singapore | South Africa | Thailand | Turkey



Benham & Reeves