



Benham & Reeves

Fulham Reach, Hammersmith, W6

£2,031 per week, £8,800 per month + fees

 3 Bedrooms  3 Bathrooms  Furnished

An impressive 4th floor apartment offering generously proportioned accommodation situated in a sought-after Riverside development with uninterrupted River views in Hammersmith. Located within walking distance from Hammersmith Tube station (Circle, District, Piccadilly, and Hammersmith and City lines).

Please [click here](#) for full detail

Property features

3 Bedrooms | 3 Bathrooms | Reception | Furnished | Fitted Kitchen | EPC-B | Concierge, Gym, Swimming Pool, Spa | River Views | Nearby Hammersmith Tube Station

For more information about this property,
please call our Hammersmith branch on

020 8600 0960

Redress & Client Money Protection :

Benham and Reeves are members of The Property Ombudsman redress scheme and have Client Money protection with ARLA Propertymark. You can find more information on our website at <https://www.benhams.com/membership/>



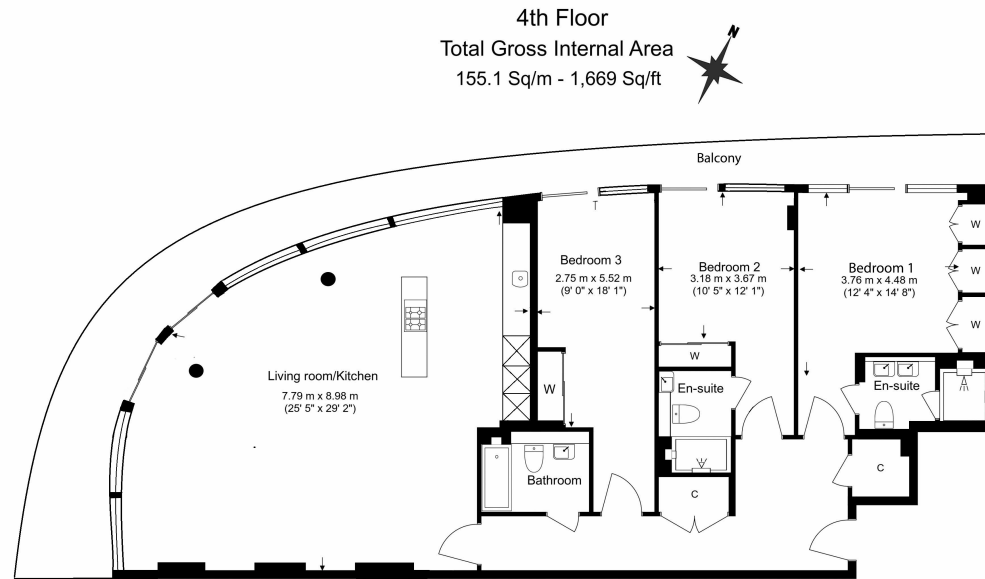
Benham & Reeves



Fulham Reach, Hammersmith, W6

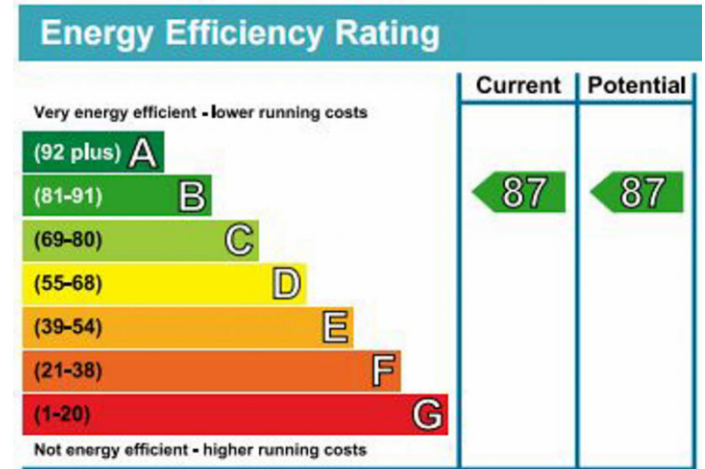
£2,031 per week, £8,800 per month + fees

www.benhams.com



BenhamReeves

Floor Plan measurements are approximate and are for illustrative purposes only. While we do not doubt the floor plans accuracy, we make no guarantee, warranty or representation as to the accuracy and completeness of the floor plan.



London branches open six days a week Mon - Sat

Canary Wharf | City | Colindale | Dartmouth Park | Ealing | Fulham
Hammersmith | Hampstead | Highgate | Hyde Park | Kensington | Kew
Knightsbridge | Nine Elms | Shoreditch | Southall | Surrey Quays
Wapping | Wembley | White City | Woolwich

International offices

China | Hong Kong SAR | India | Indonesia | Qatar | Malaysia | Middle East | Pakistan
Singapore | South Africa | Thailand | Turkey



BenhamReeves