



Benham & Reeves

Fulham Reach, Hammersmith, W6

£800 per week, £3,467 per month + fees

 2 Bedrooms  2 Bathrooms  Furnished

A spacious 2nd floor apartment set in a highly sought-after Riverside development, with a host of wonderful facilities, within walking distance of the amenities and transport links of Hammersmith.

Please [click here](#) for full detail

Property features

2 Bedrooms | 2 Bathrooms | Reception | Furnished | Fitted Kitchen | EPC-B | 930 Sq Ft | 2 Private Balconies | Gym & Spa Facilities | Nearby Hammersmith Tube Station

For more information about this property,
please call our Hammersmith branch on

020 8600 0960

Redress & Client Money Protection :

Benham and Reeves are members of The Property Ombudsman redress scheme and have Client Money protection with ARLA Propertymark. You can find more information on our website at <https://www.benhamandreeves.com/membership/>



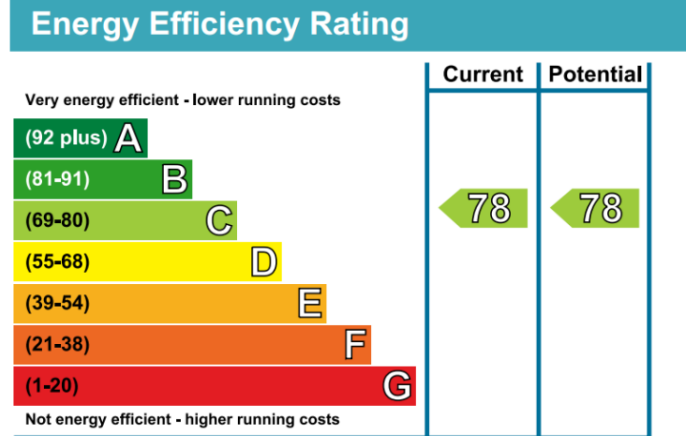
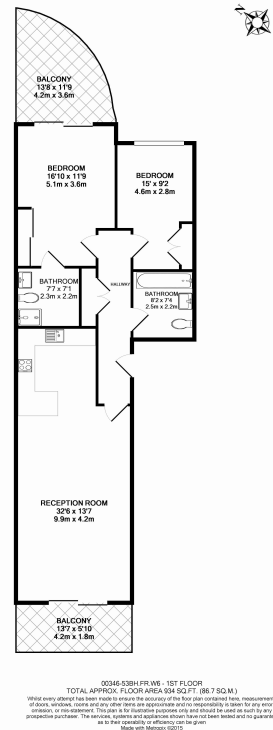
Benham & Reeves



Fulham Reach, Hammersmith, W6

£800 per week, £3,467 per month + fees

www.benhams.com



London branches open six days a week Mon - Sat

Canary Wharf | City | Colindale | Dartmouth Park | Ealing | Fulham
Hammersmith | Hampstead | Highgate | Hyde Park | Kensington | Kew
Knightsbridge | Nine Elms | Shoreditch | Southall | Surrey Quays
Wapping | Wembley | White City | Woolwich

International offices

China | Hong Kong SAR | India | Indonesia | Qatar | Malaysia | Middle East | Pakistan
Singapore | South Africa | Thailand | Turkey



Benham & Reeves