



Benham & Reeves

Sovereign Court, Hammersmith, W6

£550 per week, £2,383 per month + fees

 1 Bedroom  1 Bathroom  Furnished

A spacious, 2nd floor apartment with large private terrace and secure bike storage set in South West London, located a short walk from Southfield Tube and Putney Stations.

Please [click here](#) for full detail

Property features

1 bedroom 1 bathroom, furnished | Comfort Cooling, Wall heating and Underfloor heating | Open-Plan Fitted Kitchen | 24 hr Concierge | Quality Residents' Gym | EPC-B | Very Sizeable Open-Plan Reception with Hardwood Floors | Fully furnished | Moments from Hammersmith Underground Station & Local Buses

For more information about this property, please call our Hammersmith branch on

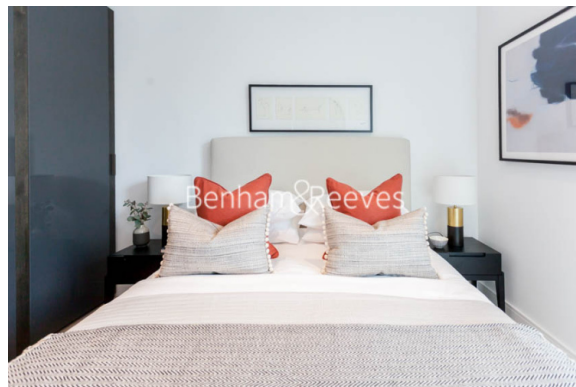
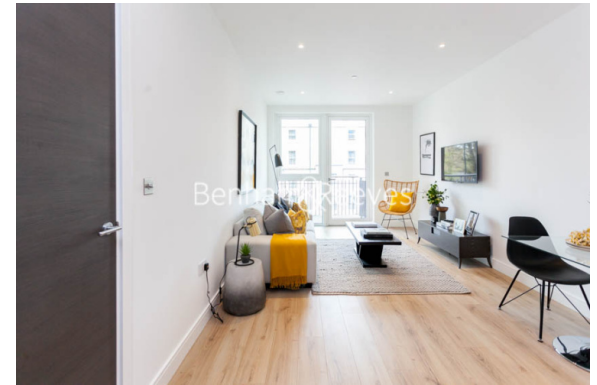
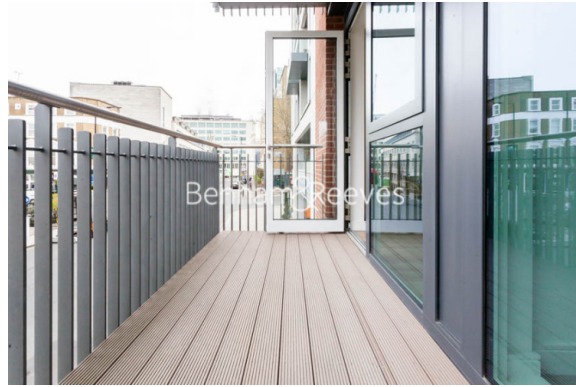
020 8600 0960

Redress & Client Money Protection :

Benham and Reeves are members of The Property Ombudsman redress scheme and have Client Money protection with ARLA Propertymark. You can find more information on our website at <https://www.benhams.com/membership/>



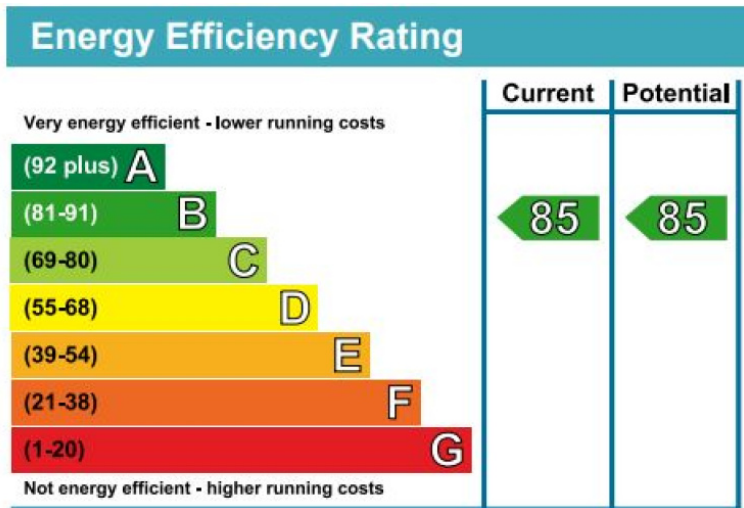
Benham & Reeves



Sovereign Court, Hammersmith, W6

£550 per week, £2,383 per month + fees

www.benhams.com



London branches open six days a week Mon - Sat

Canary Wharf | City | Colindale | Dartmouth Park | Ealing | Fulham
Hammersmith | Hampstead | Highgate | Hyde Park | Kensington | Kew
Knightsbridge | Nine Elms | Shoreditch | Southall | Surrey Quays
Wapping | Wembley | White City | Woolwich

International offices

China | Hong Kong SAR | India | Indonesia | Qatar | Malaysia | Middle East |
Singapore | South Africa | Thailand | Turkey

