



Benham & Reeves

Queens Wharf, Hammersmith, W6

£462 per week, £2,002 per month + fees

 Studio  1 Bathroom  Furnished

Bright 2nd floor studio apartment set in a popular riverside development with superb facilities. A mere 2-minute walk from Hammersmith underground station (Piccadilly and District lines)

Please [click here](#) for full detail

Property features

Studio | 1 Bathroom | Reception | Furnished | Fitted Kitchen | EPC-B | Landscaped podium gardens | 24 hour concierge | Nearby Hammersmith underground

For more information about this property, please call our Hammersmith branch on

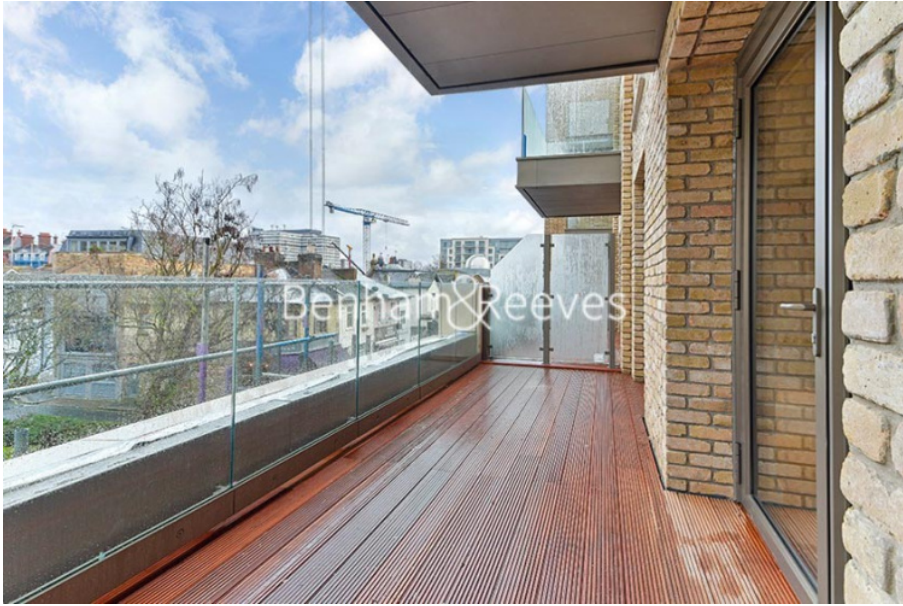
020 8600 0960

Redress & Client Money Protection :

Benham and Reeves are members of The Property Ombudsman redress scheme and have Client Money protection with ARLA Propertymark. You can find more information on our website at <https://www.benhams.com/membership/>



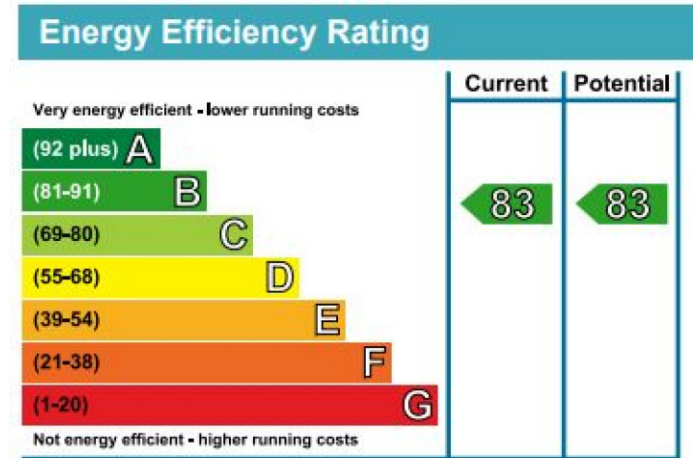
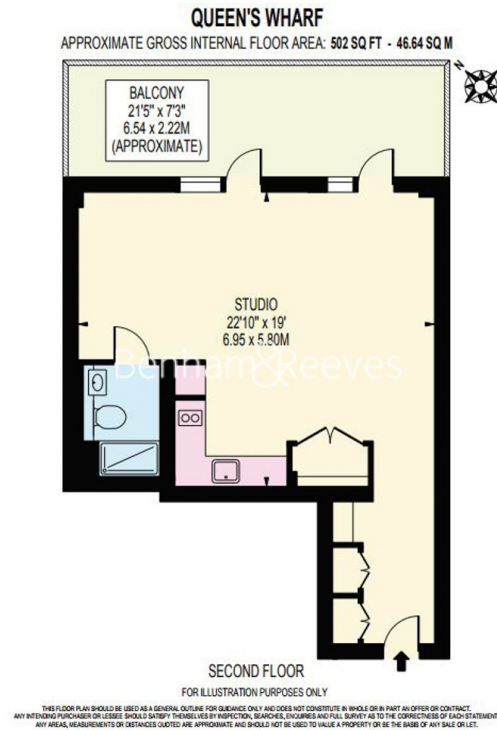
Benham & Reeves



Queens Wharf, Hammersmith, W6

£462 per week, £2,002 per month + fees

www.benhams.com



London branches open six days a week Mon - Sat

Canary Wharf | City | Colindale | Dartmouth Park | Ealing | Fulham
Hammersmith | Hampstead | Highgate | Hyde Park | Kensington | Kew
Knightsbridge | Nine Elms | Shoreditch | Southall | Surrey Quays
Wapping | Wembley | White City | Woolwich

International offices

China | Hong Kong SAR | India | Indonesia | Qatar | Malaysia | Middle East |
Singapore | South Africa | Thailand | Turkey



Benham & Reeves