



Benham & Reeves

Woodlands, Hampstead, NW11

£912 per week, £3,950 per month + fees

 4 Bedrooms  2 Bathrooms 
Furnished/UnFurnished

A spacious and well-maintained large, detached family home situated one of Golders Green's premier roads. Golders Green Underground and Brent Cross Station are both within walking distance.

Please [click here](#) for full detail

Property features

Four-bedroom | Three-bathroom detached home | Located on one of Golders Green's premier roads | Two bright reception rooms offering ample living space | Newly fitted eat-in kitchen with sleek granite worktops | EPC - D | Furnished/unfurnished | Beautifully maintained private garden | A separate study room with integrated kitchen facilities | Off-street parking for 2-3 vehicles

For more information about this property,
please call our Hampstead branch on

020 7435 9681

Redress & Client Money Protection :

Benham and Reeves are members of The Property Ombudsman redress scheme and have Client Money protection with ARLA Propertymark. You can find more information on our website at <https://www.benhams.com/membership/>



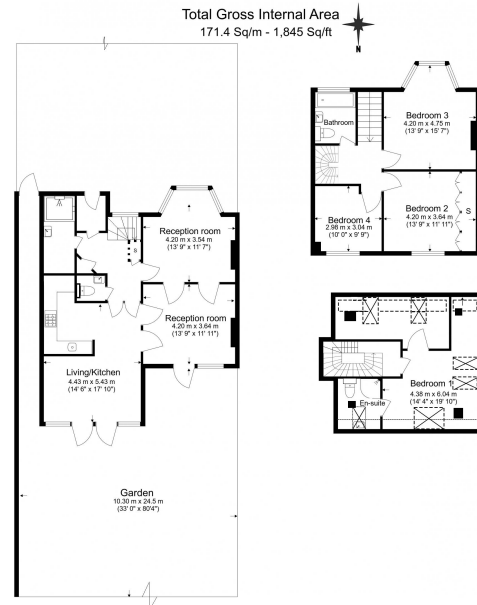
Benham & Reeves



Woodlands, Hampstead, NW11

£912 per week, £3,950 per month + fees

www.benhams.com



Benham & Reeves

Floor Plan measurements are approximate and are for illustrative purposes only. While we do not doubt the floor plans accuracy, we make no guarantee, warranty or representation as to the accuracy and completeness of the floor plan.

Score	Energy rating	Current	Potential
92+	A		
81-91	B		82 B
69-80	C		
55-68	D	67 D	
39-54	E		
21-38	F		
1-20	G		

London branches open six days a week Mon - Sat

Canary Wharf | City | Colindale | Dartmouth Park | Ealing | Fulham
Hammersmith | Hampstead | Highgate | Hyde Park | Kensington | Kew
Knightsbridge | Nine Elms | Shoreditch | Southall | Surrey Quays
Wapping | Wembley | White City | Woolwich

International offices

China | Hong Kong SAR | India | Indonesia | Qatar | Malaysia | Middle East | Pakistan
Singapore | South Africa | Thailand | Turkey



Benham & Reeves