



Benham & Reeves

Golders Green, Hampstead, NW11

£923 per week, £4,000 per month + fees

 3 Bedrooms  3 Bathrooms 
Furnished/UnFurnished

Situated on the first floor of an exclusive new-build block of just four apartments, this beautifully designed three-bedroom home offers around 1,137 sq ft (105 sq m) of well-planned living space.

The property features a bright and spacious open-plan reception with a fully fitted kitchen, leading directly onto a private balcony. Three well-proportioned bedrooms are complemented by stylish finishes Air Conditioning. throughout, making it ideal for both families and professionals.

Please [click here](#) for full detail

Property features

Modern three-bedroom first-floor apartment | Exclusive new-build block of just four flats | Approx. 1,137 sq ft / 105 sq m of living space | Bright open-plan reception and dining area | Fully fitted kitchen with direct access to private balcony | EPC- B | Three well-proportioned bedrooms | Stylish finishes throughout | Quiet residential road in Golders Green | Close to shops, cafés, transport links and local amenities

For more information about this property,
please call our Hampstead branch on

020 7435 9681

Redress & Client Money Protection :

Benham and Reeves are members of The Property Ombudsman redress scheme and have Client Money protection with ARLA Propertymark. You can find more information on our website at <https://www.benhams.com/membership/>



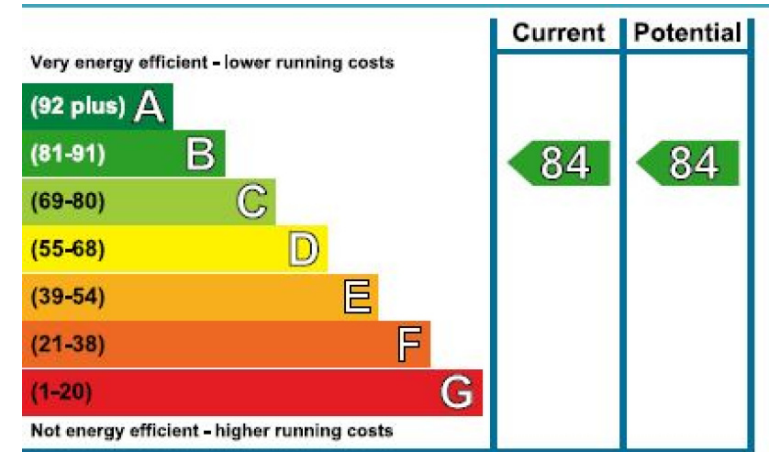
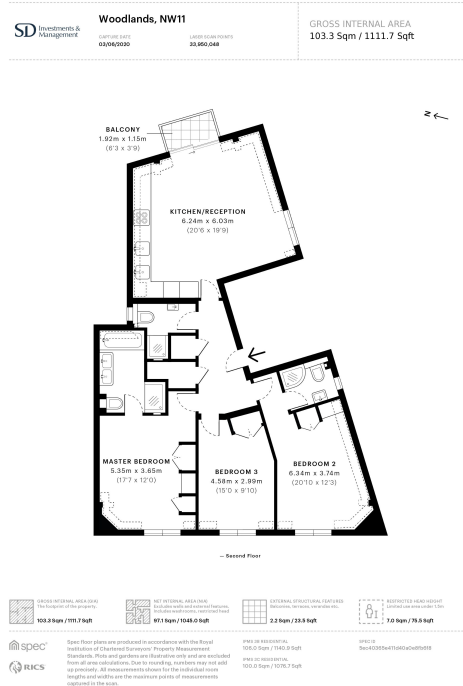
Benham & Reeves



Golders Green, Hampstead, NW11

£923 per week, £4,000 per month + fees

www.benhams.com



London branches open six days a week Mon - Sat

Canary Wharf | City | Colindale | Dartmouth Park | Ealing | Fulham
Hammersmith | Hampstead | Highgate | Hyde Park | Kensington | Kew
Knightsbridge | Nine Elms | Shoreditch | Southall | Surrey Quays
Wapping | Wembley | White City | Woolwich

International offices

China | Hong Kong SAR | India | Indonesia | Qatar | Malaysia | Middle East | Pakistan
Singapore | South Africa | Thailand | Turkey



Benham & Reeves