



Benham & Reeves

Kidderpore Gardens, Hampstead, NW3

£1,950 per week, £8,450 per month + fees

 3 Bedrooms  3 Bathrooms  Unfurnished

A beautiful spacious maisonette apartment, with private garden and concierge parking, situated in a new converted Grade II listed heritage property. The development has easy access into Central London via bus, tube (Northern Line), or a short drive by car. EPC-B

Please [click here](#) for full detail

Property features

Large Living Room | Interior designed for luxury | Three luxury bedrooms | Utility room | Private balcony | EPC-B | Underground car parking | Communal garden | Concierge | Nearby Central London tube (Northern Line)

For more information about this property,
please call our Hampstead branch on

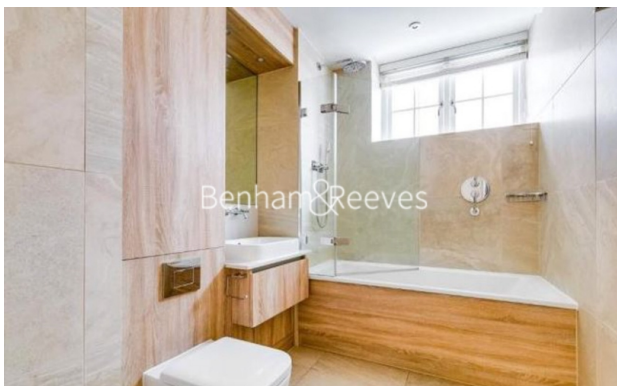
020 7435 9681



Redress & Client Money Protection :

Benham and Reeves are members of The Property Ombudsman redress scheme and have Client Money protection with ARLA Propertymark. You can find more information on our website at <https://www.benham.com/membership/>

Benham & Reeves



Kidderpore Gardens, Hampstead, NW3

£1,950 per week, £8,450 per month + fees

www.benhams.com



Score	Energy rating	Current	Potential
92+	A		
81-91	B	83 B	83 B
69-80	C		
55-68	D		
39-54	E		
21-38	F		
1-20	G		

London branches open six days a week Mon - Sat

Canary Wharf | City | Colindale | Dartmouth Park | Ealing | Fulham
Hammersmith | Hampstead | Highgate | Hyde Park | Kensington | Kew
Knightsbridge | Nine Elms | Shoreditch | Southall | Surrey Quays
Wapping | Wembley | White City | Woolwich

International offices

China | Hong Kong SAR | India | Indonesia | Qatar | Malaysia | Middle East | Pakistan
Singapore | South Africa | Thailand | Turkey

