



Benham & Reeves

Gayton Crescent, Hampstead, NW3

£542 per week, £2,350 per month + fees

🛏️ 2 Bedrooms 🚿 1 Bathroom 🚗
Furnished/UnFurnished

This bright and spacious flat is set on the raised ground floor of a period building located in the heart of Hampstead, within reach of Hampstead Tube Station (Northern Line).

Please [click here](#) for full detail

Property features

2 Bedrooms | 1 Bathroom | Reception | Furn/Unfurn | Modern bathroom | EPC-D | Large Bay Windows | Fully Fitted Modern Kitchen | Wood Floors | Close to Northern Line

For more information about this property,
please call our Hampstead branch on

020 7435 9681

Redress & Client Money Protection :

Benham and Reeves are members of The Property Ombudsman redress scheme and have Client Money protection with ARLA Propertymark. You can find more information on our website at <https://www.benhamandreeves.com/membership/>



Benham & Reeves

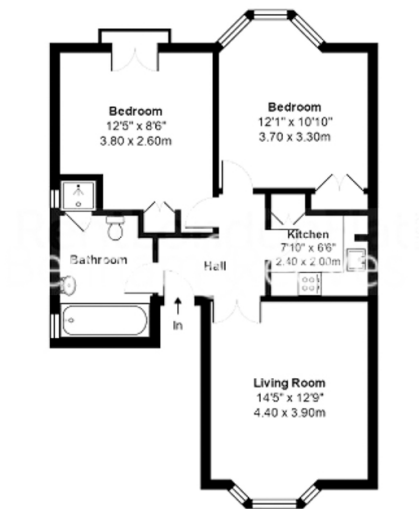


Gayton Crescent, Hampstead, NW3

£542 per week, £2,350 per month + fees

www.benhams.com

GAYTON CRESCENT, HAMPSTEAD, NW3



Approximate Gross Internal Area: 613 ft² ... 57.0 m²

London branches open six days a week Mon - Sat

Canary Wharf | City | Colindale | Dartmouth Park | Ealing | Fulham
Hammersmith | Hampstead | Highgate | Hyde Park | Kensington | Kew
Knightsbridge | Nine Elms | Shoreditch | Southall | Surrey Quays
Wapping | Wembley | White City | Woolwich

International offices

China | Hong Kong SAR | India | Indonesia | Qatar | Malaysia | Middle East | Pakistan
Singapore | South Africa | Thailand | Turkey



Benham & Reeves