



Benham & Reeves

Finchley Road, Hampstead, NW3

£577 per week, £2,500 per month + fees

🛏️ 2 Bedrooms 🚿 2 Bathrooms 🚗 Unfurnished

Modern, stylish recently refurbished ground floor apartment, with private patio area, situated close to the amenities of Finchley Road and Swiss Cottage.

Please [click here](#) for full detail

Property features

Brand new refurbished flat | Excellent 2 Double Bedroom Apartment | Open Plan Kitchen | Wood Floors | Private Patio | EPC-TBC | Great Storage | Great Transport Links | Finchley Road Underground Station

For more information about this property,
please call our Property Management branch on

020 7319 9740

Redress & Client Money Protection :

Benham and Reeves are members of The Property Ombudsman redress scheme and have Client Money protection with ARLA Propertymark. You can find more information on our website at <https://www.benhams.com/membership/>



Benham & Reeves



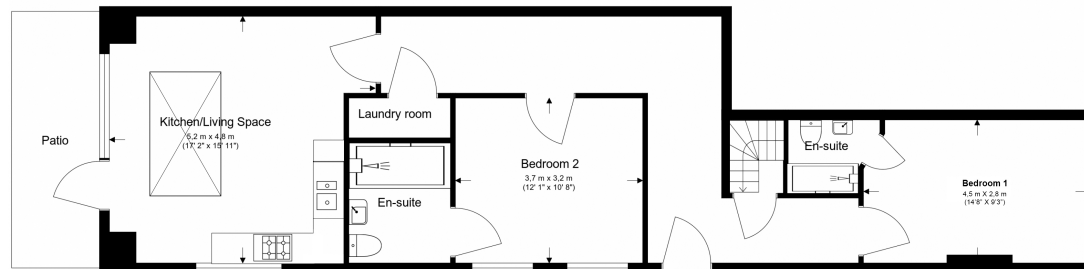
Finchley Road, Hampstead, NW3

£577 per week, £2,500 per month + fees

www.benhams.com

Upper Ground Floor

Total Gross Internal Area
78.8 Sq/m - 848 Sq/ft



Floor Plan measurements are approximate and are for illustrative purposes only. While we do not doubt the floor plans accuracy, we make no guarantee, warranty or representation as to the accuracy and completeness of the floor plan.

London branches open six days a week Mon - Sat

Canary Wharf | City | Colindale | Dartmouth Park | Ealing | Fulham
Hammersmith | Hampstead | Highgate | Hyde Park | Kensington | Kew
Knightsbridge | Nine Elms | Shoreditch | Southall | Surrey Quays
Wapping | Wembley | White City | Woolwich

International offices

China | Hong Kong SAR | India | Indonesia | Qatar | Malaysia | Middle East |
Singapore | South Africa | Thailand | Turkey



Benham & Reeves