



Benham & Reeves

Lyndhurst Gardens, Hampstead, NW3

£2,192 per week, £9,500 per month + fees

 3 Bedrooms  3 Bathrooms 
Furnished/UnFurnished

A magnificent, large apartment on the garden level of a striking double-fronted red-brick Grade II Listed mansion situated on a wide, leafy avenue in a Prime Location. Ideally placed for the amenities of Belsize Park, South End Green, and Hampstead Village.

Please [click here](#) for full detail

Property features

Three Double bedroom | Two En- Suite bathrooms (Including an En- Suite Shower room) | Generous Double Reception Room | Separate Breakfast Room | Utility Area | EPC- E | Private Study | Private Patio | Access to Communal Gardens | Residents' Parking

For more information about this property,
please call our Hampstead branch on

020 7435 9681

Redress & Client Money Protection :

Benham and Reeves are members of The Property Ombudsman redress scheme and have Client Money protection with ARLA Propertymark. You can find more information on our website at <https://www.benhamandreeves.com/membership/>



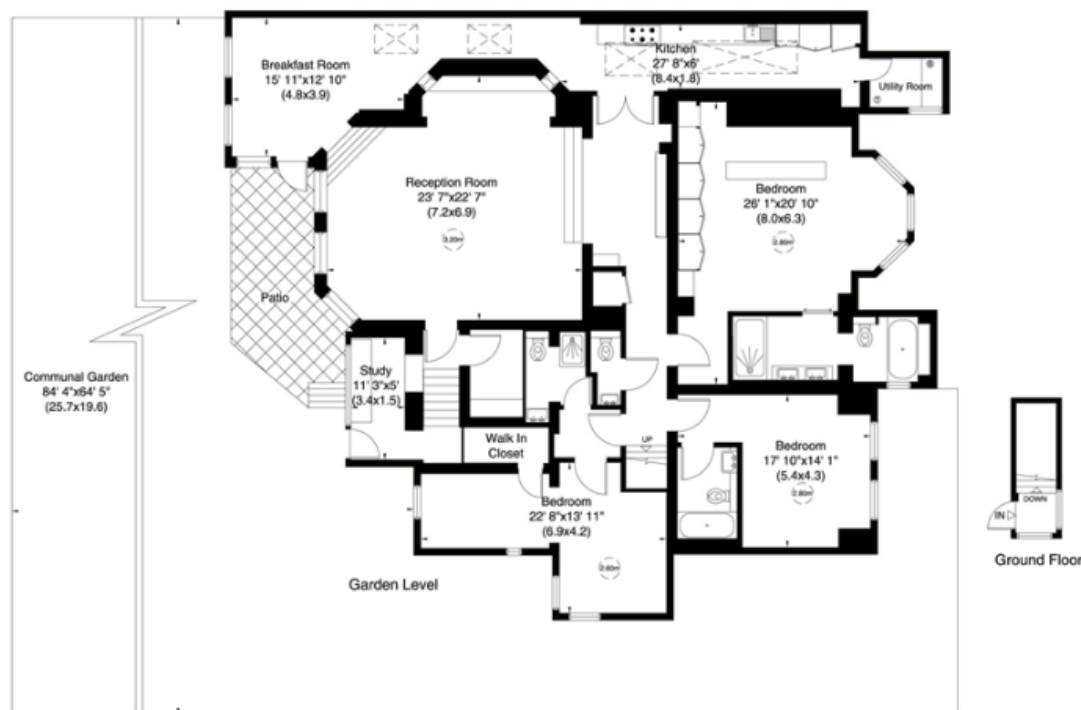
Benham & Reeves



Lyndhurst Gardens, Hampstead, NW3

£2,192 per week, £9,500 per month + fees

www.benhams.com



Score	Energy rating	Current	Potential
92+	A		
81-91	B		
69-80	C		
55-68	D		60 D
39-54	E	39 E	
21-38	F		
1-20	G		

Activate Window

London branches open six days a week Mon - Sat

Canary Wharf | City | Colindale | Dartmouth Park | Ealing | Fulham
Hammersmith | Hampstead | Highgate | Hyde Park | Kensington | Kew
Knightsbridge | Nine Elms | Shoreditch | Southall | Surrey Quays
Wapping | Wembley | White City | Woolwich

International offices

China | Hong Kong SAR | India | Indonesia | Qatar | Malaysia | Middle East | Pakistan
Singapore | South Africa | Thailand | Turkey



Benham & Reeves