



Benham & Reeves

Kidderpore Avenue, Hampstead, NW3

£1,300 per week, £5,633 per month + fees

🏠 3 Bedrooms 🚿 3 Bathrooms 🛋️ Furnished

A beautiful and unique interior designed split-level ground floor apartment, with concierge parking, situated in a sought-after development close to the amenities of Hammersmith. Well-located for Hammersmith (Piccadilly and District lines) Underground station. EPC-B

Please [click here](#) for full detail

Property features

Brand New sought-after development | Interior designed for luxury | Spacious reception | Open plan kitchen with dining area | Three luxury bedrooms | EPC-B | Split level | Private balcony | Underground car park | Nearby Tube (Northern Line) Station

For more information about this property, please call our Hampstead branch on

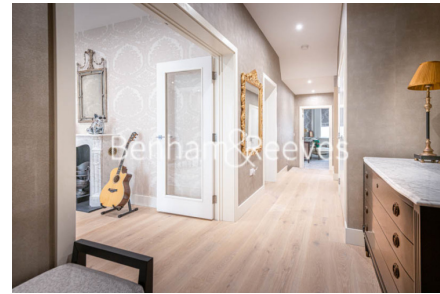
020 7435 9681

Redress & Client Money Protection :

Benham and Reeves are members of The Property Ombudsman redress scheme and have Client Money protection with ARLA Propertymark. You can find more information on our website at <https://www.benhams.com/membership/>



Benham & Reeves



Kidderpore Avenue, Hampstead, NW3

£1,300 per week, £5,633 per month + fees

www.benhams.com



Floor Plan measurements are approximate and are for illustrative purposes only. While we do not doubt the floor plans accuracy, we make no guarantee, warranty or representation as to the accuracy and completeness of the floor plan.

Score	Energy rating	Current	Potential
92+	A		
81-91	B	83 B	83 B
69-80	C		
55-68	D		
39-54	E		
21-38	F		
1-20	G		

London branches open six days a week Mon - Sat

Canary Wharf | City | Colindale | Dartmouth Park | Ealing | Fulham
Hammersmith | Hampstead | Highgate | Hyde Park | Kensington | Kew
Knightsbridge | Nine Elms | Shoreditch | Southall | Surrey Quays
Wapping | Wembley | White City | Woolwich

International offices

China | Hong Kong SAR | India | Indonesia | Qatar | Malaysia | Middle East |
Singapore | South Africa | Thailand | Turkey

