



Benham & Reeves

Cambridge Avenue, Hampstead, NW6

£612 per week, £2,652 per month + fees

 2 Bedrooms  1 Bathroom  Furnished

A spacious 3rd floor apartment situated within a secure building in a desirable location close to Lord's Cricket Ground and Regents Park, with excellent transport links nearby.

Please [click here](#) for full detail

Property features

Two Double Bedrooms | One bathrooms | Bright and spacious reception room with dining space | Private balcony | Furnished | EPC- C | Close to Lord's Cricket Ground | Cambridge Avenue is ideally positioned in north Maida Vale | Close to local amenities | Well located moments from amenities and transport links

For more information about this property,
please call our Hampstead branch on

020 7435 9681

Redress & Client Money Protection :

Benham and Reeves are members of The Property Ombudsman redress scheme and have Client Money protection with ARLA Propertymark. You can find more information on our website at <https://www.benhamandreeves.com/membership/>



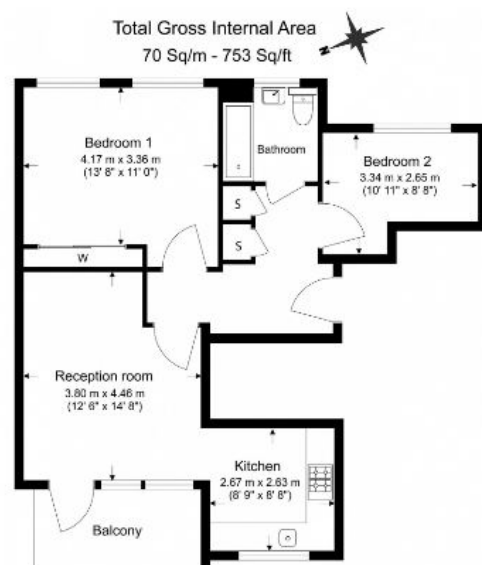
Benham & Reeves



Cambridge Avenue, Hampstead, NW6

£612 per week, £2,652 per month + fees

www.benhams.com



Benham & Reeves

Floor Plan measurements are approximate and are for illustrative purposes only. While we do not doubt the floor plans accuracy, we make no guarantee, warranty or representation as to the accuracy and completeness of the floor plan.

Score	Energy rating	Current	Potential
92+	A		
81-91	B		
69-80	C	77 C	78 C
55-68	D		
39-54	E		
21-38	F		
1-20	G		

London branches open six days a week Mon - Sat

Canary Wharf | City | Colindale | Dartmouth Park | Ealing | Fulham
Hammersmith | Hampstead | Highgate | Hyde Park | Kensington | Kew
Knightsbridge | Nine Elms | Shoreditch | Southall | Surrey Quays
Wapping | Wembley | White City | Woolwich

International offices

China | Hong Kong SAR | India | Indonesia | Qatar | Malaysia | Middle East |
Singapore | South Africa | Thailand | Turkey



Benham & Reeves