



Benham & Reeves

Dodson House, Hampstead, NW7

£427 per week, £1,850 per month + fees

 1 Bedroom  1 Bathroom  Furnished

A generously proportioned ground floor apartment with parking and residents' gym located in NW7. This property is perfect for those seeking an exceptional apartment with convenient transportation links to The City. Mill Hill East Underground Station is conveniently located within a 10-minute walk.

Please [click here](#) for full detail

Property features

One Large Double bedroom | One bathroom | Furnished | Open-plan living space | Private parking | EPC-B | On site Gym | Large private balcony | In Ridgeway Views - a brand new development in Mill Hill | Mill Hill East Tube Station (Northern Line)

For more information about this property,
please call our Hampstead branch on

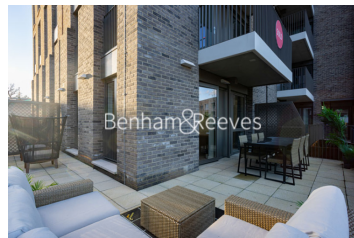
020 7435 9681

Redress & Client Money Protection :

Benham and Reeves are members of The Property Ombudsman redress scheme and have Client Money protection with ARLA Propertymark. You can find more information on our website at <https://www.benhamandreeves.com/membership/>



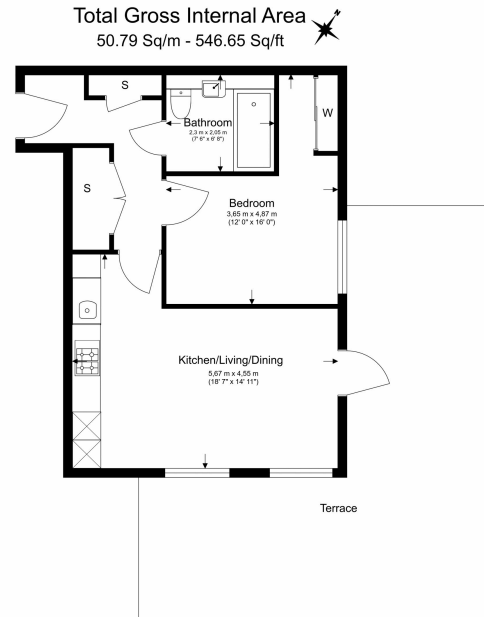
Benham & Reeves



Dodson House, Hampstead, NW7

£427 per week, £1,850 per month + fees

www.benhams.com



Floor Plan measurements are approximate and are for illustrative purposes only. While we do not doubt the floor plans accuracy, we make no guarantee, warranty or representation as to the accuracy and completeness of the floor plan.

Score	Energy rating	Current	Potential
92+	A		
81-91	B	83 B	83 B
69-80	C		
55-68	D		
39-54	E		
21-38	F		
1-20	G		

London branches open six days a week Mon - Sat

Canary Wharf | City | Colindale | Dartmouth Park | Ealing | Fulham
Hammersmith | Hampstead | Highgate | Hyde Park | Kensington | Kew
Knightsbridge | Nine Elms | Shoreditch | Southall | Surrey Quays
Wapping | Wembley | White City | Woolwich

International offices

China | Hong Kong SAR | India | Indonesia | Qatar | Malaysia | Middle East | Pakistan
Singapore | South Africa | Thailand | Turkey



Benham & Reeves