



Benham & Reeves

## **Ivy Point, Hannaford Walk, E3**

£542 per week, £2,350 per month + fees

 2 Bedrooms    1 Bathroom    Unfurnished

Modern apartment situated within an impressive tower, with communal roof terrace, in the heart of Bow. Ideally positioned for Bromley by Bow Tube Station.

Please [click here](#) for full detail

## Property features

**Two Bedroom | Family Size Bathroom | Open Planned Living | Fitted Kitchen | Part Furnished | EPC-B | Private Balcony | 24hr Concierge | Communal Roof Terrace | Bromley By Bow Underground Station Nearby**

For more information about this property,  
please call our Canary Wharf branch on

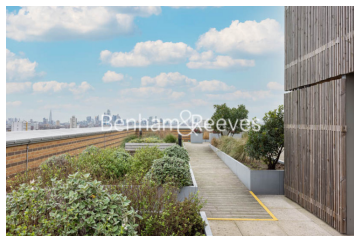
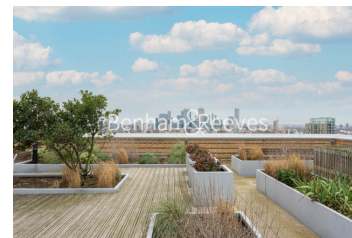
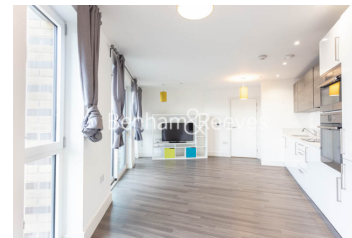
**020 8036 3200**

Redress & Client Money Protection :

Benham and Reeves are members of The Property Ombudsman redress scheme and have Client Money protection with ARLA Propertymark. You can find more information on our website at <https://www.benhams.com/membership/>



**Benham&Reeves**

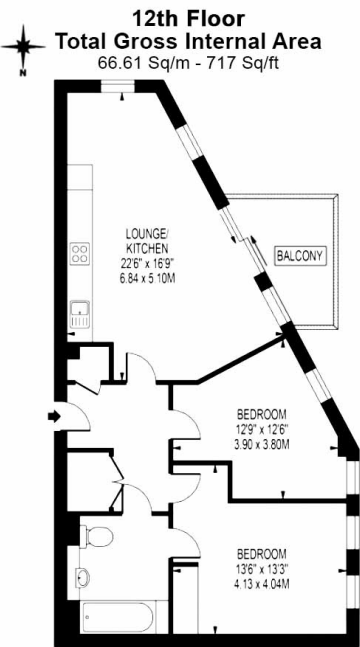




# Ivy Point, Hannaford Walk, E3

£542 per week, £2,350 per month + fees

[www.benhams.com](http://www.benhams.com)



Floor Plan measurements are approximate and are for illustrative purposes only. While we do not doubt the floor plans accuracy, we make no guarantee, warranty or representation as to the accuracy and completeness of the floor plan.

Score	Energy rating	Current	Potential
92+	A		
81-91	B	85   B	85   B
69-80	C		
55-68	D		
39-54	E		
21-38	F		
1-20	G		

## London branches open six days a week Mon - Sat

Canary Wharf | City | Colindale | Dartmouth Park | Ealing | Fulham  
Hammersmith | Hampstead | Highgate | Hyde Park | Kensington | Kew  
Knightsbridge | Nine Elms | Shoreditch | Southall | Surrey Quays  
Wapping | Wembley | White City | Woolwich

## International offices

China | Hong Kong SAR | India | Indonesia | Qatar | Malaysia | Middle East | Pakistan  
Singapore | South Africa | Thailand | Turkey

