



Benham & Reeves

Eastman Road, Harrow, HA1

£368 per week, £1,595 per month + fees

 1 Bedroom  1 Bathroom  Furnished

An immaculate 5th floor apartment situated in a newly built development close to the amenities of Harrow and a short walk from Harrow & Wealdstone Stations

Please [click here](#) for full detail

Property features

1 Bedroom | Balcony | Wood floors | Furnished | Lift | EPC-B | Floor-To-Ceiling Windows | Walking distance to transport links | Nearby Harrow & Wealdstone

For more information about this property,
please call our Wembley branch on

020 8187 3100

Redress & Client Money Protection :

Benham and Reeves are members of The Property Ombudsman redress scheme and have Client Money protection with ARLA Propertymark. You can find more information on our website at <https://www.benhamandreeves.com/membership/>



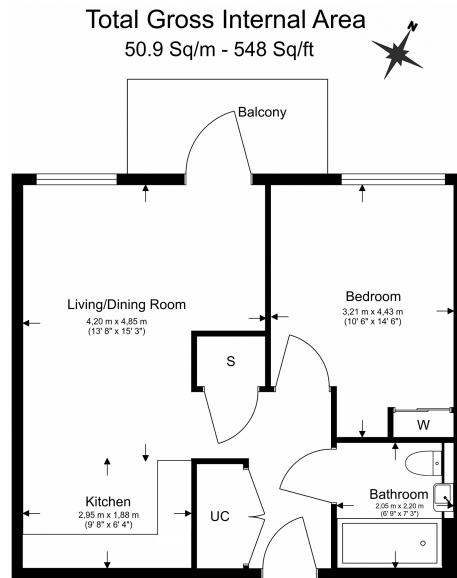
Benham & Reeves



Eastman Road, Harrow, HA1

£368 per week, £1,595 per month + fees

www.benhams.com



Floor Plan measurements are approximate and are for illustrative purposes only. While we do not doubt the floor plans accuracy, we make no guarantee, warranty or representation as to the accuracy and completeness of the floor plan.

Score	Energy rating	Current	Potential
92+	A		
81-91	B	84 B	84 B
69-80	C		
55-68	D		
39-54	E		
21-38	F		
1-20	G		

London branches open six days a week Mon - Sat

Canary Wharf | City | Colindale | Dartmouth Park | Ealing | Fulham
Hammersmith | Hampstead | Highgate | Hyde Park | Kensington | Kew
Knightsbridge | Nine Elms | Shoreditch | Southall | Surrey Quays
Wapping | Wembley | White City | Woolwich

International offices

China | Hong Kong SAR | India | Indonesia | Qatar | Malaysia | Middle East | Pakistan
Singapore | South Africa | Thailand | Turkey



Benham & Reeves