



Benham & Reeves

**Perceval Square, Harrow, HA1**

£554 per week, £2,401 per month + fees

 2 Bedrooms    2 Bathrooms    Furnished

A spacious 11th floor apartment with parking, which offers good security and is situated in the heart of Harrow. Excellently located within walking distance to Harrow-on-the-Hill village and Harrow-on-the-Hill Underground and Railway Station.

Please [click here](#) for full detail

## Property features

**Secure underground parking | Concierge | Terrace | Wood floors | 1055 Sq ft | EPC-B | Furnished | Floor To Ceiling Windows | Close to Harrow-on-the-Hill Station**

For more information about this property,  
please call our Wembley branch on

**020 8187 3100**

Redress & Client Money Protection :

Benham and Reeves are members of The Property Ombudsman redress scheme and have Client Money protection with ARLA Propertymark. You can find more information on our website at <https://www.benhams.com/membership/>



Benham & Reeves

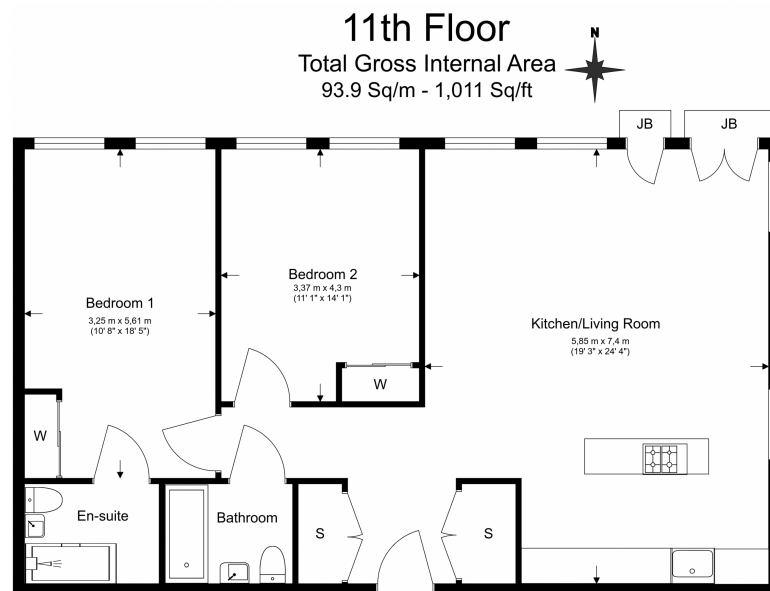




# Perceval Square, Harrow, HA1

£554 per week, £2,401 per month + fees

www.benhams.com



Floor Plan measurements are approximate and are for illustrative purposes only. While we do not doubt the floor plans accuracy, we make no guarantee, warranty or representation as to the accuracy and completeness of the floor plan.

Score	Energy rating	Current	Potential
92+	A		
81-91	B	87 B	87 B
69-80	C		
55-68	D		
39-54	E		
21-38	F		
1-20	G		

## London branches open six days a week Mon - Sat

Canary Wharf | City | Colindale | Dartmouth Park | Ealing | Fulham  
Hammersmith | Hampstead | Highgate | Hyde Park | Kensington | Kew  
Knightsbridge | Nine Elms | Shoreditch | Southall | Surrey Quays  
Wapping | Wembley | White City | Woolwich

## International offices

China | Hong Kong SAR | India | Israel | Malaysia | Middle East | Pakistan  
Qatar | Singapore | South Africa | Thailand | Turkey



Benham & Reeves