



Benham & Reeves

**Donovan Way, Harrow, HA1**

£369 per week, £1,599 per month + fees

 1 Bedroom     1 Bathroom     Unfurnished

A spacious 4th floor apartment, set in a sought-after Eastman Village development situated amongst lovely landscaped, green open spaces. Excellently located within walking distance to all local amenities of Harrow and transport links.

Please [click here](#) for full detail

## Property features

**Brand new | 1 Bedroom | 1 Bathroom | Residents gym | Balcony | EPC-B | Unfurnished | local amenities of Harrow and transport links | Harrow & Wealdstone underground and Overground station.**

For more information about this property,  
please call our Wembley branch on

**020 8187 3100**

Redress & Client Money Protection :

Benham and Reeves are members of The Property Ombudsman redress scheme and have Client Money protection with ARLA Propertymark. You can find more information on our website at <https://www.benhams.com/membership/>



**Benham & Reeves**

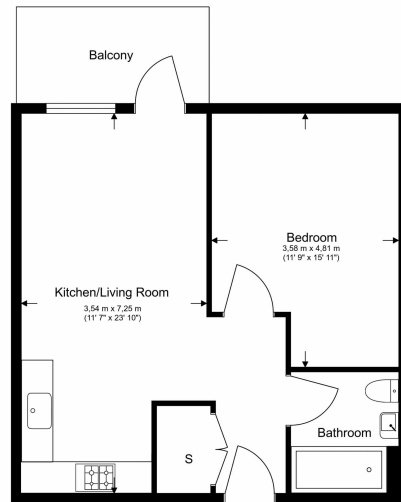


# Donovan Way, Harrow, HA1

£369 per week, £1,599 per month + fees

www.benhams.com

Total Gross Internal Area  
52.3 Sq/m - 563 Sq/ft



Floor Plan measurements are approximate and are for illustrative purposes only. While we do not doubt the floor plans accuracy, we make no guarantee, warranty or representation as to the accuracy and completeness of the floor plan.

Score	Energy rating	Current	Potential
92+	A		
81-91	B	84 B	84 B
69-80	C		
55-68	D		
39-54	E		
21-38	F		
1-20	G		

## London branches open six days a week Mon - Sat

Canary Wharf | City | Colindale | Dartmouth Park | Ealing | Fulham  
Hammersmith | Hampstead | Highgate | Hyde Park | Kensington | Kew  
Knightsbridge | Nine Elms | Shoreditch | Southall | Surrey Quays  
Wapping | Wembley | White City | Woolwich

## International offices

China | Hong Kong SAR | India | Indonesia | Qatar | Malaysia | Middle East |  
Singapore | South Africa | Thailand | Turkey



Benham & Reeves