



Benham & Reeves

Donovan Way, Harrow, HA1

£485 per week, £2,102 per month + fees

🛏️ 2 Bedrooms 🚿 2 Bathrooms 🛋️ Furnished

A brand new 5th floor apartment, set in a sought-after development situated amongst lovely landscaped, green open spaces. Excellently located within walking distance to all local amenities of Harrow and transport links.

Please [click here](#) for full detail

Property features

Brand new | 2 bedroom | 2 bathroom | fully fitted modern kitchen | Residents gym | EPC-B | Furnished | Balcony | Nearby Wealdstone underground and Overground station.

For more information about this property,
please call our Wembley branch on

020 8187 3100

Redress & Client Money Protection :

Benham and Reeves are members of The Property Ombudsman redress scheme and have Client Money protection with ARLA Propertymark. You can find more information on our website at <https://www.benhamandreeves.com/membership/>



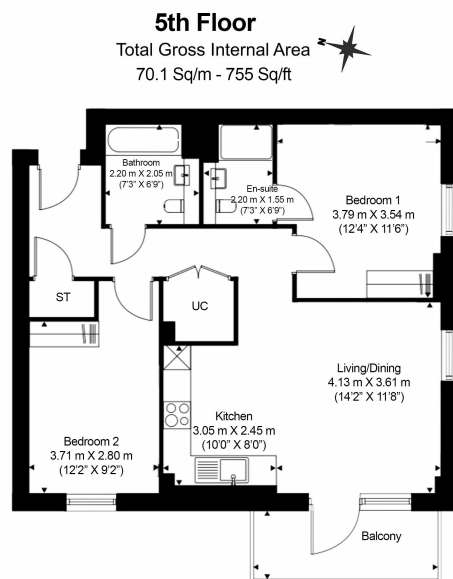
Benham & Reeves



Donovan Way, Harrow, HA1

£485 per week, £2,102 per month + fees

www.benhams.com



Benham & Reeves

Floor Plan measurements are approximate and are for illustrative purposes only. While we do not doubt the floor plans accuracy, we make no guarantee, warranty or representation as to the accuracy and completeness of the floor plan.

Score	Energy rating	Current	Potential
92+	A		
81-91	B	85 B	85 B
69-80	C		
55-68	D		
39-54	E		
21-38	F		
1-20	G		

London branches open six days a week Mon - Sat

Canary Wharf | City | Colindale | Dartmouth Park | Ealing | Fulham
Hammersmith | Hampstead | Highgate | Hyde Park | Kensington | Kew
Knightsbridge | Nine Elms | Shoreditch | Southall | Surrey Quays
Wapping | Wembley | White City | Woolwich

International offices

China | Hong Kong SAR | India | Indonesia | Qatar | Malaysia | Middle East |
Singapore | South Africa | Thailand | Turkey



Benham & Reeves