



Benham & Reeves

Donovan Way, Harrow, HA1

£393 per week, £1,703 per month + fees

 1 Bedroom  1 Bathroom  Furnished

A brand new 5th floor apartment, set in a sought-after Eastman Village development set amongst lovely landscaped, green open spaces. Excellently located within walking distance to all local amenities of Harrow and transport links.

Please [click here](#) for full detail

Property features

Brand new | Residents gym | Balcony | Furnished | Fully fitted modern kitchen | EPC- B | Wood floors | Open plan reception room | Nearby Harrow & Wealdstone underground station

For more information about this property,
please call our Wembley branch on

020 8187 3100

Redress & Client Money Protection :

Benham and Reeves are members of The Property Ombudsman redress scheme and have Client Money protection with ARLA Propertymark. You can find more information on our website at <https://www.benhamandreeves.com/membership/>



Benham & Reeves

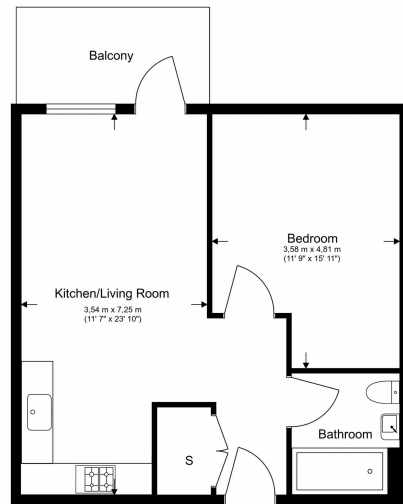


Donovan Way, Harrow, HA1

£393 per week, £1,703 per month + fees

www.benhams.com

Total Gross Internal Area
52.3 Sq/m - 563 Sq/ft



Benham & Reeves

Floor Plan measurements are approximate and are for illustrative purposes only. While we do not doubt the floor plans accuracy, we make no guarantee, warranty or representation as to the accuracy and completeness of the floor plan.

Score	Energy rating	Current	Potential
92+	A		
81-91	B	84 B	84 B
69-80	C		
55-68	D		
39-54	E		
21-38	F		
1-20	G		

London branches open six days a week Mon - Sat

Canary Wharf | City | Colindale | Dartmouth Park | Ealing | Fulham
Hammersmith | Hampstead | Highgate | Hyde Park | Kensington | Kew
Knightsbridge | Nine Elms | Shoreditch | Southall | Surrey Quays
Wapping | Wembley | White City | Woolwich

International offices

China | Hong Kong SAR | India | Indonesia | Qatar | Malaysia | Middle East |
Singapore | South Africa | Thailand | Turkey



Benham & Reeves