



Benham & Reeves

## **Carnation Gardens, Hayes, UB3**

£508 per week, £2,201 per month + fees

 2 Bedrooms    2 Bathrooms    Furnished

This stylish 2nd floor apartment, with parking, is situated an exciting new development in Hayes, close to Hayes and Harlington Station a strategic stop on the new super-fast Elizabeth Line.

Please [click here](#) for full detail

## Property features

**2 Bedrooms | 2 Bathrooms | Parking | Wood floors | Residents gym | EPC-B | Furnished | Fully fitted modern kitchen | Close to fast transport connections**

For more information about this property,  
please call our Southall branch on

**020 8051 0800**

Redress & Client Money Protection :

Benham and Reeves are members of The Property Ombudsman redress scheme and have Client Money protection with ARLA Propertymark. You can find more information on our website at <https://www.benhams.com/membership/>



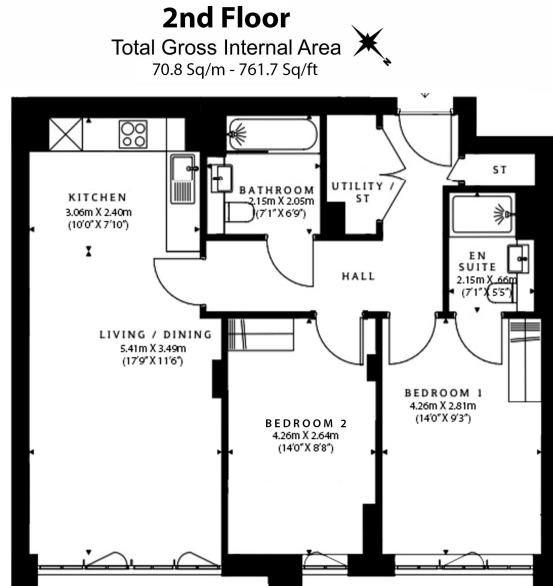
Benham & Reeves



# Carnation Gardens, Hayes, UB3

£508 per week, £2,201 per month + fees

www.benhams.com



Floor Plan measurements are approximate and are for illustrative purposes only. While we do not doubt the floor plans accuracy, we make no guarantee, warranty or representation as to the accuracy and completeness of the floor plan.

Score	Energy rating	Current	Potential
92+	A		
81-91	B	84   B	84   B
69-80	C		
55-68	D		
39-54	E		
21-38	F		
1-20	G		

## London branches open six days a week Mon - Sat

Canary Wharf | City | Colindale | Dartmouth Park | Ealing | Fulham  
Hammersmith | Hampstead | Highgate | Hyde Park | Kensington | Kew  
Knightsbridge | Nine Elms | Shoreditch | Southall | Surrey Quays  
Wapping | Wembley | White City | Woolwich

## International offices

China | Hong Kong SAR | India | Indonesia | Qatar | Malaysia | Middle East | Pakistan  
Singapore | South Africa | Thailand | Turkey



Benham & Reeves