



Benham & Reeves

Carnation Gardens, Hayes, UB3

£370 per week, £1,603 per month + fees

 1 Bedroom  1 Bathroom  Furnished

Modern 2nd floor apartment situated in an exciting development close to the amenities of Hayes and a short walk from Hayes and Harlington Station on the Elizabeth Line.

Please [click here](#) for full detail

Property features

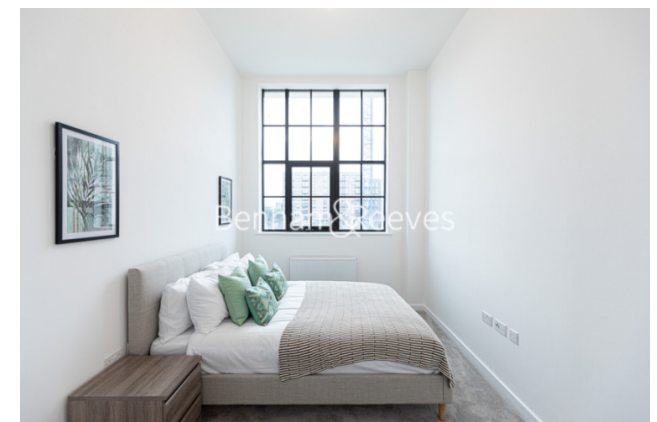
One Bedroom | Wood floors | Residents gym | Furnished | High ceilings | EPC-B | Large Open Plan Reception | Large Windows | Close To Fast Transport Connections | Nearby Hayes and Harlington Station

For more information about this property,
please call our Southall branch on

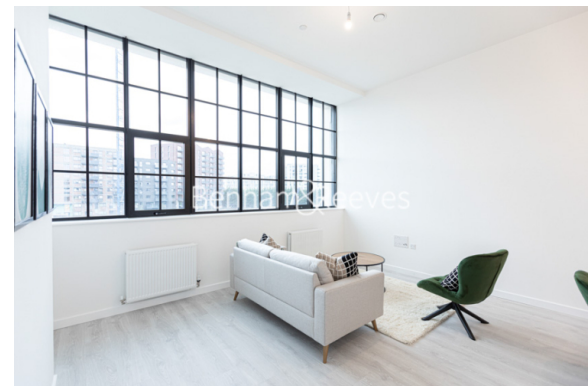
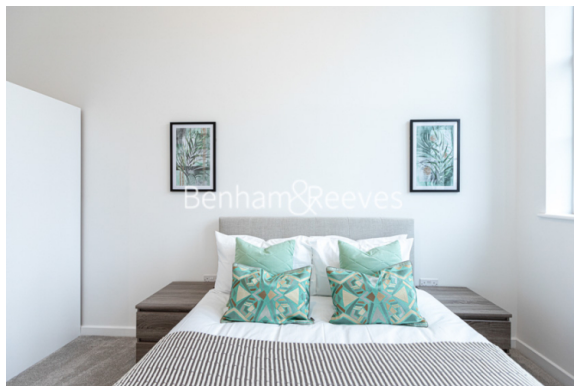
020 8051 0800

Redress & Client Money Protection :

Benham and Reeves are members of The Property Ombudsman redress scheme and have Client Money protection with ARLA Propertymark. You can find more information on our website at <https://www.benhamandreeves.com/membership/>



Benham & Reeves



Carnation Gardens, Hayes, UB3

£370 per week, £1,603 per month + fees

www.benhams.com

Score	Energy rating	Current	Potential
92+	A		
81-91	B	82 B	82 B
69-80	C		
55-68	D		
39-54	E		
21-38	F		
1-20	G		

London branches open six days a week Mon - Sat

Canary Wharf | City | Colindale | Dartmouth Park | Ealing | Fulham
Hammersmith | Hampstead | Highgate | Hyde Park | Kensington | Kew
Knightsbridge | Nine Elms | Shoreditch | Southall | Surrey Quays
Wapping | Wembley | White City | Woolwich

International offices

China | Hong Kong SAR | India | Indonesia | Qatar | Malaysia | Middle East | Pakistan
Singapore | South Africa | Thailand | Turkey

