



Benham & Reeves

Farine Avenue, Hayes, UB3

£369 per week, £1,599 per month + fees

 1 Bedroom  1 Bathroom  Unfurnished

This 1st floor apartment situated in an exciting development in Hayes, is a short walk from Hayes and Harlington Station, a strategic stop on the super-fast Elizabeth Line. EPC-B

Please [click here](#) for full detail

Property features

1 bedroom | Balcony | Residents gym | Unfurnished | Wood floors | EPC-B | Fast transport connections | Fully fitted modern kitchen | Close to Amenities | Neaby Hayes and Harlington Station

For more information about this property, please call our Southall branch on

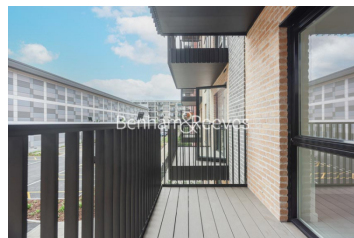
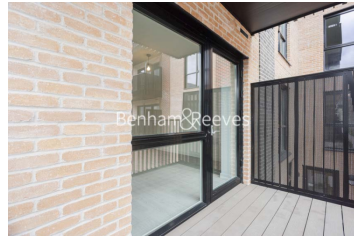
020 8051 0800

Redress & Client Money Protection :

Benham and Reeves are members of The Property Ombudsman redress scheme and have Client Money protection with ARLA Propertymark. You can find more information on our website at <https://www.benhams.com/membership/>



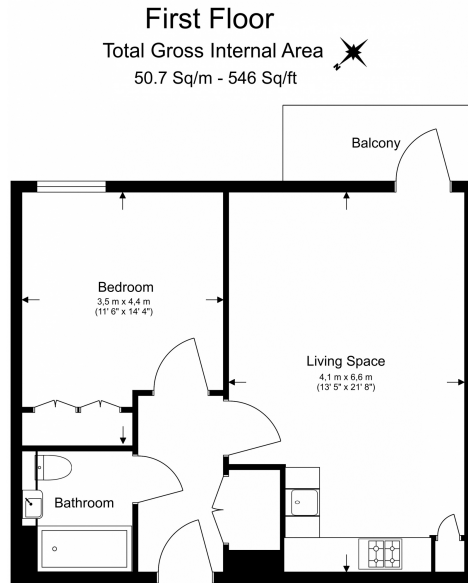
Benham & Reeves



Farine Avenue, Hayes, UB3

£369 per week, £1,599 per month + fees

www.benhams.com



Floor Plan measurements are approximate and are for illustrative purposes only. While we do not doubt the floor plans accuracy, we make no guarantee, warranty or representation as to the accuracy and completeness of the floor plan.

Score	Energy rating	Current	Potential
92+	A		
81-91	B	83 B	83 B
69-80	C		
55-68	D		
39-54	E		
21-38	F		
1-20	G		

London branches open six days a week Mon - Sat

Canary Wharf | City | Colindale | Dartmouth Park | Ealing | Fulham
Hammersmith | Hampstead | Highgate | Hyde Park | Kensington | Kew
Knightsbridge | Nine Elms | Shoreditch | Southall | Surrey Quays
Wapping | Wembley | White City | Woolwich

International offices

China | Hong Kong SAR | India | Indonesia | Qatar | Malaysia | Middle East |
Singapore | South Africa | Thailand | Turkey

