



Benham & Reeves

Farine Avenue, Hayes, UB3

£416 per week, £1,803 per month + fees

 1 Bedroom  1 Bathroom  Unfurnished

Modern 9th floor apartment, with parking, is situated in an exciting development in Hays a short walk from Hayes and Harlington Station, a strategic stop on the super-fast Elizabeth Line.

Please [click here](#) for full detail

Property features

One Bedroom | Parking | Residents gym | Unfurnished | Wood floors | EPC-B | Balcony | Large windows | Fully Fitted Kitchen | Nearby Hayes and Harlington Station

For more information about this property,
please call our Southall branch on

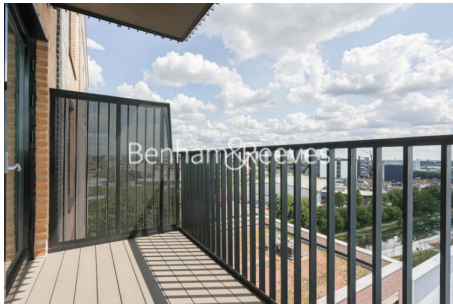
020 8154 1089

Redress & Client Money Protection :

Benham and Reeves are members of The Property Ombudsman redress scheme and have Client Money protection with ARLA Propertymark. You can find more information on our website at <https://www.benhamandreeves.com/membership/>



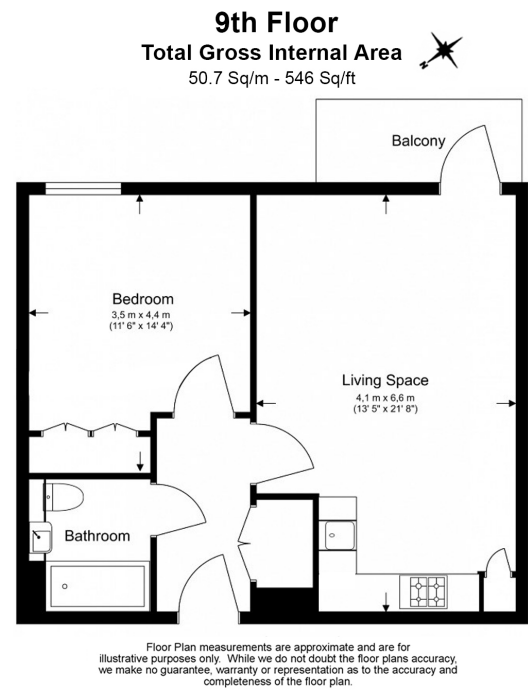
Benham & Reeves



Farine Avenue, Hayes, UB3

£416 per week, £1,803 per month + fees

www.benhams.com



| Score | Energy rating | Current | Potential |
|-------|---------------|---------|-----------|
| 92+ | A | | |
| 81-91 | B | 85 B | 85 B |
| 69-80 | C | | |
| 55-68 | D | | |
| 39-54 | E | | |
| 21-38 | F | | |
| 1-20 | G | | |

London branches open six days a week Mon - Sat

Canary Wharf | City | Colindale | Dartmouth Park | Ealing | Fulham
Hammersmith | Hampstead | Highgate | Hyde Park | Kensington | Kew
Knightsbridge | Nine Elms | Shoreditch | Southall | Surrey Quays
Wapping | Wembley | White City | Woolwich

International offices

China | Hong Kong SAR | India | Indonesia | Qatar | Malaysia | Middle East |
Singapore | South Africa | Thailand | Turkey

