



Benham & Reeves

Farine Avenue, Hayes, UB3

£392 per week, £1,699 per month + fees

 1 Bedroom  1 Bathroom 
Furnished/UnFurnished

A stunning, brand-new 2nd floor apartment situated in an exciting new development in Hayes, a short walk from Hayes and Harlington Station, a strategic stop on the new super-fast Elizabeth Line. EPC-B

Please [click here](#) for full detail

Property features

BRAND NEW | Residents' gym | Furnished or unfurnished | Open Plan Kitchen | Spacious Storage | EPC- B | Balcony | Communal Courtyard | Parking Available at Additional Cost | Short walk from Hayes and Harlington Station

For more information about this property,
please call our Southall branch on

020 8051 0800

Redress & Client Money Protection :

Benham and Reeves are members of The Property Ombudsman redress scheme and have Client Money protection with ARLA Propertymark. You can find more information on our website at <https://www.benhams.com/membership/>



Benham & Reeves

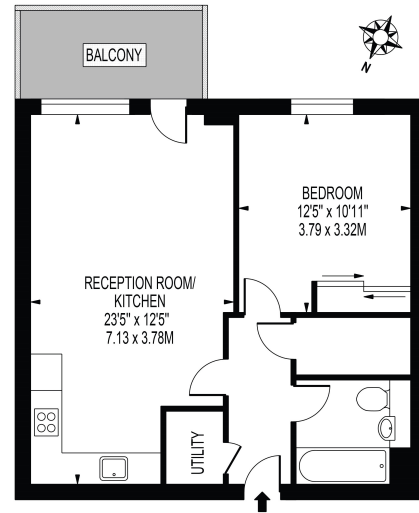


Farine Avenue, Hayes, UB3

£392 per week, £1,699 per month + fees

www.benhams.com

APPROXIMATE GROSS INTERNAL FLOOR AREA: 553 SQ FT - 51.37 SQ M



2nd floor
FOR ILLUSTRATION PURPOSES ONLY

THIS FLOOR PLAN SHOULD BE USED AS A GENERAL OUTLINE FOR GUIDANCE ONLY AND DOES NOT CONSTITUTE IN WHOLE OR IN PART AN OFFER OR CONTRACT. ANY INTENDING PURCHASER OR LESSEE SHOULD SATISFY THEMSELVES BY INSPECTION, SEARCHES, ENGINEERS AND FULL SURVEY AS TO THE CORRECTNESS OF EACH STATEMENT. ANY MEASUREMENTS OR DIMENSIONS QUOTED ARE APPROXIMATE AND SHOULD NOT BE USED TO VALUE A PROPERTY OR BE THE BASIS OF ANY SALE OR LET.

Score	Energy rating	Current	Potential
92+	A		
81-91	B	86 B	86 B
69-80	C		
55-68	D		
39-54	E		
21-38	F		
1-20	G		

London branches open six days a week Mon - Sat

Canary Wharf | City | Colindale | Dartmouth Park | Ealing | Fulham
Hammersmith | Hampstead | Highgate | Hyde Park | Kensington | Kew
Knightsbridge | Nine Elms | Shoreditch | Southall | Surrey Quays
Wapping | Wembley | White City | Woolwich

International offices

China | Hong Kong SAR | India | Indonesia | Qatar | Malaysia | Middle East |
Singapore | South Africa | Thailand | Turkey

