



Benham & Reeves

Farine Avenue, Hayes, UB3

£496 per week, £2,149 per month + fees

 2 Bedrooms  2 Bathrooms 
Furnished/UnFurnished

A stunning brand-new 5th floor apartment situated in an exciting new development in Hayes, a short walk from Hayes and Harlington Station, a strategic stop on the new super-fast Elizabeth Line.

Please [click here](#) for full detail

Property features

Brand new | Residents' gym | Furnished or unfurnished | Open Plan Kitchen | Spacious Storage | EPC- B | Balcony | Communal Courtyard | Parking Available at Additional Cost | Nearby Hayes and Harlington Station

For more information about this property,
please call our Southall branch on

020 8051 0800

Redress & Client Money Protection :

Benham and Reeves are members of The Property Ombudsman redress scheme and have Client Money protection with ARLA Propertymark. You can find more information on our website at <https://www.benhams.com/membership/>



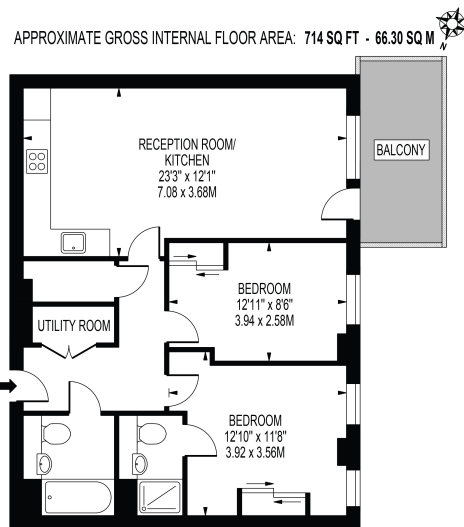
Benham & Reeves



Farine Avenue, Hayes, UB3

£496 per week, £2,149 per month + fees

www.benhams.com



Fifth floor
FOR ILLUSTRATION PURPOSES ONLY
THE FLOOR PLAN SHOULD BE USED AS A GENERAL GUIDE ONLY AND DOES NOT CONSTITUTE AN OFFER OR CONTRACT. ANY INTENDING PURCHASER OR LESSEE SHOULD SATISFY THEMSELVES BY INSPECTION, MEASUREMENT, SURVEY AND/OR AS TO THE CORRECTNESS OF EACH STATEMENT. ANY AREAL MEASUREMENTS OR DISTANCES QUOTED ARE APPROXIMATE AND SHOULD NOT BE USED TO VALUE A PROPERTY OR BE THE BASIS OF ANY SALE OFFER.

Score	Energy rating	Current	Potential
92+	A		
81-91	B	86 B	86 B
69-80	C		
55-68	D		
39-54	E		
21-38	F		
1-20	G		

London branches open six days a week Mon - Sat

Canary Wharf | City | Colindale | Dartmouth Park | Ealing | Fulham
Hammersmith | Hampstead | Highgate | Hyde Park | Kensington | Kew
Knightsbridge | Nine Elms | Shoreditch | Southall | Surrey Quays
Wapping | Wembley | White City | Woolwich

International offices

China | Hong Kong SAR | India | Indonesia | Qatar | Malaysia | Middle East |
Singapore | South Africa | Thailand | Turkey

