



Benham & Reeves

## Farine Avenue, Hayes, UB3

£392 per week, £1,699 per month + fees

 1 Bedroom    1 Bathroom     
Furnished/UnFurnished

A stunning brand-new 3rd floor apartment situated in an exciting new development in Hayes, a short walk from Hayes and Harlington Station, a strategic stop on the new super-fast Elizabeth Line.

Please [click here](#) for full detail

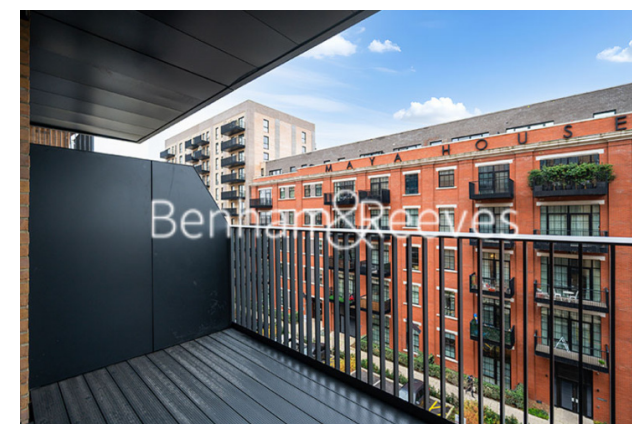
## Property features

**Brand new | Residents' gym | Furnished or unfurnished | Open Plan Kitchen | Spacious Storage | EPC- B | Balcony | Communal Courtyard | Parking available at additional cost | Nearby Hayes and Harlington Station**

For more information about this property,  
please call our Southall branch on

**020 8051 0800**

Redress & Client Money Protection :  
Benham and Reeves are members of The Property Ombudsman redress scheme and have Client Money protection with ARLA Propertymark.  
You can find more information on our website at <https://www.benhams.com/membership/>



Benham & Reeves

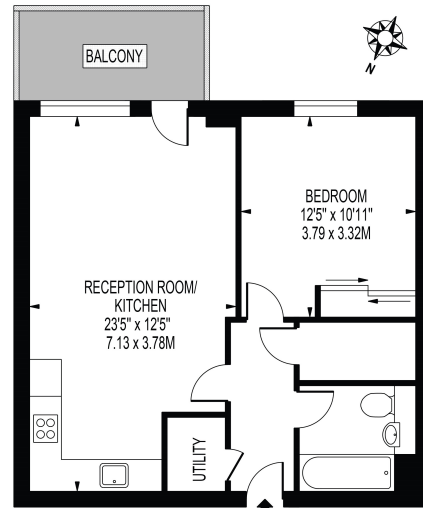


# Farine Avenue, Hayes, UB3

£392 per week, £1,699 per month + fees

www.benhams.com

APPROXIMATE GROSS INTERNAL FLOOR AREA: 553 SQ FT - 51.37 SQ M



Third floor

FOR ILLUSTRATION PURPOSES ONLY

THIS FLOOR PLAN SHOULD BE USED AS A GENERAL OUTLINE FOR GUIDANCE ONLY AND DOES NOT CONSTITUTE AN OFFER OR CONTRACT. ANY PURCHASER OR LESSEE SHOULD SATISFY THEMSELVES BY INSPECTING, SURVEYING AND/OR CONSULTING THE COMPETENCES OF EACH STATEMENT. ANY AREA, MEASUREMENTS OR DISTANCES QUOTED ARE APPROXIMATE AND SHOULD NOT BE USED TO VALUE A PROPERTY OR BE THE BASIS OF ANY SALE OR LET.

Score	Energy rating	Current	Potential
92+	A		
81-91	B	85 B	85 B
69-80	C		
55-68	D		
39-54	E		
21-38	F		
1-20	G		

## London branches open six days a week Mon - Sat

Canary Wharf | City | Colindale | Dartmouth Park | Ealing | Fulham  
 Hammersmith | Hampstead | Highgate | Hyde Park | Kensington | Kew  
 Knightsbridge | Nine Elms | Shoreditch | Southall | Surrey Quays  
 Wapping | Wembley | White City | Woolwich

## International offices

China | Hong Kong SAR | India | Indonesia | Qatar | Malaysia | Middle East |  
 Singapore | South Africa | Thailand | Turkey

