



Benham & Reeves

Carnation Gardens, Hayes, UB3

£392 per week, £1,699 per month + fees

 2 Bedrooms  2 Bathrooms  Furnished

Superb, brand new spacious 4th floor apartment, with forthcoming residents' gym, situated located in an exciting new development in Hayes, close to fast transport connections. A short walk from Hayes and Harlington stations.

Please [click here](#) for full detail

Property features

Parking | Terrace | Residents gym (coming soon) | Wood floors | Large Open Plan Reception | EPC-B | Large Windows | Fully Fitted Modern Kitchen | Heathrow Airport | Nearby Hayes and Harlington Station

For more information about this property, please call our Ealing branch on

020 8280 0140

Redress & Client Money Protection :

Benham and Reeves are members of The Property Ombudsman redress scheme and have Client Money protection with ARLA Propertymark. You can find more information on our website at <https://www.benhams.com/membership/>



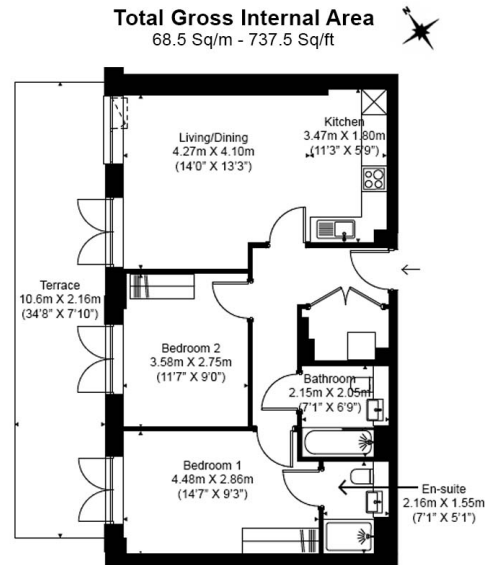
Benham & Reeves



Carnation Gardens, Hayes, UB3

£392 per week, £1,699 per month + fees

www.benhams.com



Floor Plan measurements are approximate and are for illustrative purposes only. While we do not doubt the floor plans accuracy, we make no guarantee, warranty or representation as to the accuracy and completeness of the floor plan.

Score	Energy rating	Current	Potential
92+	A		
81-91	B	85 B	85 B
69-80	C		
55-68	D		
39-54	E		
21-38	F		
1-20	G		

London branches open six days a week Mon - Sat

Canary Wharf | City | Colindale | Dartmouth Park | Ealing | Fulham
Hammersmith | Hampstead | Highgate | Hyde Park | Kensington | Kew
Knightsbridge | Nine Elms | Shoreditch | Southall | Surrey Quays
Wapping | Wembley | White City | Woolwich

International offices

China | Hong Kong SAR | India | Indonesia | Qatar | Malaysia | Middle East |
Singapore | South Africa | Thailand | Turkey

