



Benham & Reeves

Carnation Gardens, Hayes, UB3

£393 per week, £1,703 per month + fees

 1 Bedroom  1 Bathroom  Furnished

Stylish 3rd floor apartment, with parking, situated in an exciting development close to fast transport connections in Hayes.

Please [click here](#) for full detail

Property features

One Bedroom | One Bathroom | Parking | Residents gym | Furnished | EPC-B | High ceilings | Wood floors | Canary Wharf and Heathrow Airport | Hayes and Harlington Station

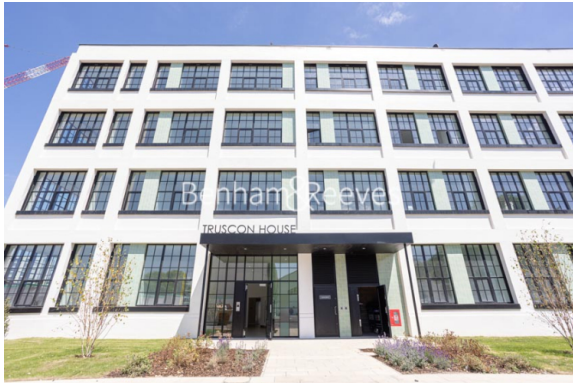
For more information about this property,
please call our Southall branch on

020 8051 0800



Redress & Client Money Protection :
Benham and Reeves are members of The Property Ombudsman redress scheme and have Client Money protection with ARLA Propertymark.
You can find more information on our website at <https://www.benham.com/membership/>

Benham & Reeves

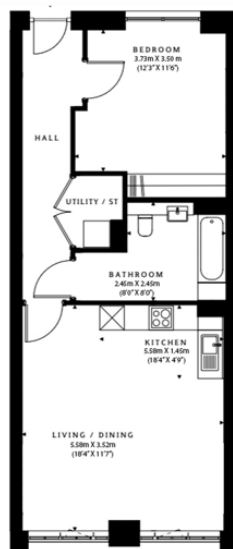


Carnation Gardens, Hayes, UB3

£393 per week, £1,703 per month + fees

www.benhams.com

3rd Floor
Total Gross Internal Area
63 Sq/m - 677.7 Sq/ft



Floor Plan measurements are approximate and are for illustrative purposes only. While we do not doubt the floor plans accuracy, we make no guarantee, warranty or representation as to the accuracy and

Score	Energy rating	Current	Potential
92+	A		
81-91	B	84 B	84 B
69-80	C		
55-68	D		
39-54	E		
21-38	F		
1-20	G		

London branches open six days a week Mon - Sat

Canary Wharf | City | Colindale | Dartmouth Park | Ealing | Fulham
Hammersmith | Hampstead | Highgate | Hyde Park | Kensington | Kew
Knightsbridge | Nine Elms | Shoreditch | Southall | Surrey Quays
Wapping | Wembley | White City | Woolwich

International offices

China | Hong Kong SAR | India | Indonesia | Qatar | Malaysia | Middle East | Pakistan
Singapore | South Africa | Thailand | Turkey



Benham & Reeves