



Benham & Reeves

Hawser Lane, Heron Wharf, E14

£623 per week, £2,700 per month + fees

 2 Bedrooms  2 Bathrooms  Furnished

A stylish brand new 10th floor apartment with views towards Canary Wharf, situated in an exceptional riverside development situated along the banks of the River Lea and easy access to Canning Town Underground. EPC-B

Please [click here](#) for full detail

Property features

Two Bedrooms | Spacious and elegantly designed open-plan living area | Sleek fully fitted Kitchen | Private balcony with views of Canary Wharf | Exclusive Residents Gym | EPC-B | 24-Hr Concierge | Comfort-enhancing underfloor heating throughout | Triple-glazed windows for enhanced insulation and comfort | Conveniently located near East India DLR Station

For more information about this property,
please call our Canary Wharf branch on

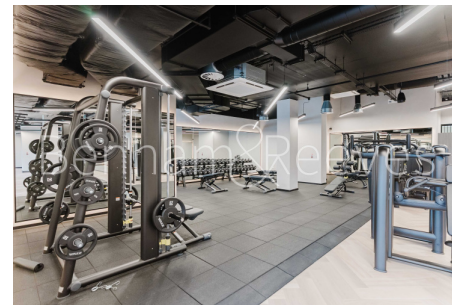
020 8036 3200

Redress & Client Money Protection :

Benham and Reeves are members of The Property Ombudsman redress scheme and have Client Money protection with ARLA Propertymark. You can find more information on our website at <https://www.benhams.com/membership/>



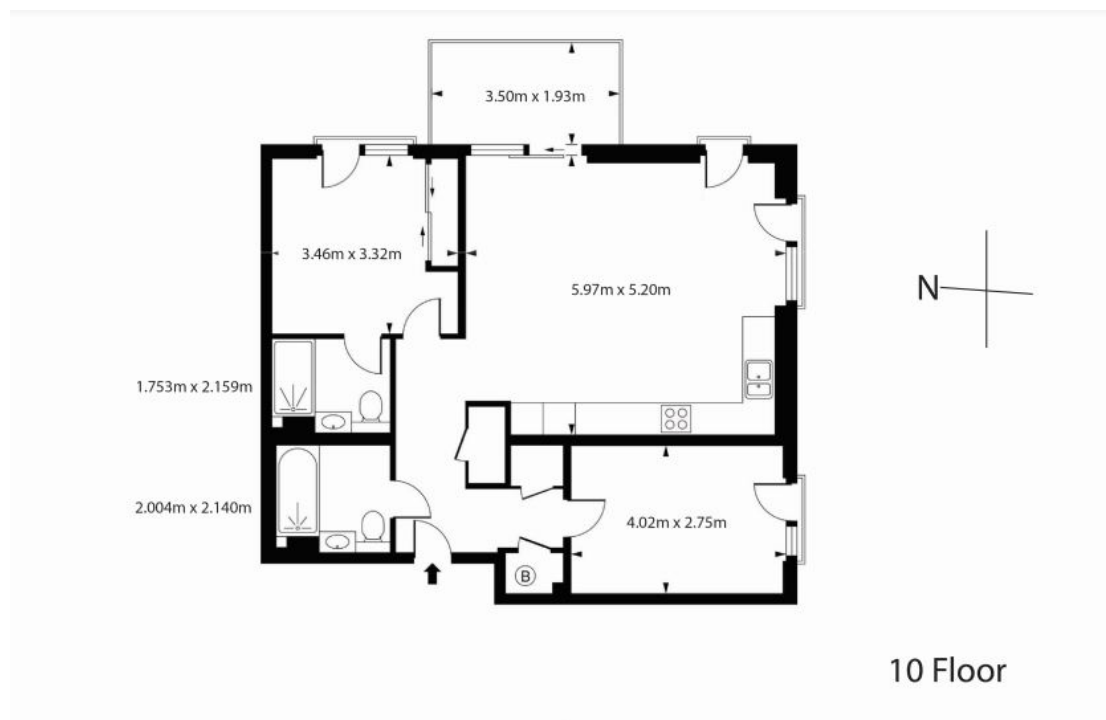
Benham & Reeves



Hawser Lane, Heron Wharf, E14

£623 per week, £2,700 per month + fees

www.benhams.com



Score	Energy rating	Current	Potential
92+	A		
81-91	B	85 B	85 B
69-80	C		
55-68	D		
39-54	E		
21-38	F		
1-20	G		

London branches open six days a week Mon - Sat

Canary Wharf | City | Colindale | Dartmouth Park | Ealing | Fulham
Hammersmith | Hampstead | Highgate | Hyde Park | Kensington | Kew
Knightsbridge | Nine Elms | Shoreditch | Southall | Surrey Quays
Wapping | Wembley | White City | Woolwich

International offices

China | Hong Kong SAR | India | Indonesia | Qatar | Malaysia | Middle East |
Singapore | South Africa | Thailand | Turkey

