



Benham & Reeves

Laycock Street, Highbury & Islington, N1

£969 per week, £4,199 per month + fees

🛏️ 2 Bedrooms 🚿 2 Bathrooms 🛋️ Furnished

Furnished, spacious apartment set over two floors' moments away from Highbury & Islington Station.

Please [click here](#) for full detail

Property features

Spacious Two Double Bedroom Apartment | 2 Family sized Bathrooms | Open Plan Reception | Fully Fitted Kitchen | Furnished | EPC-B | Daily porter | Private Balcony | Excellent Transport links Nearby | Highbury & Islington Station Moments Away

For more information about this property,
please call our City branch on

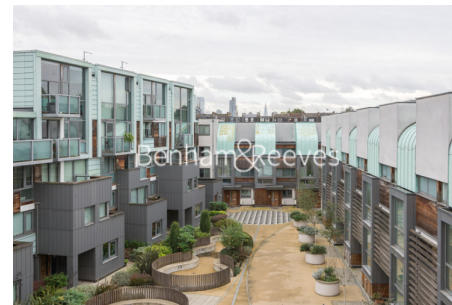
020 7213 9700

Redress & Client Money Protection :

Benham and Reeves are members of The Property Ombudsman redress scheme and have Client Money protection with ARLA Propertymark. You can find more information on our website at <https://www.benhamandreeves.com/membership/>



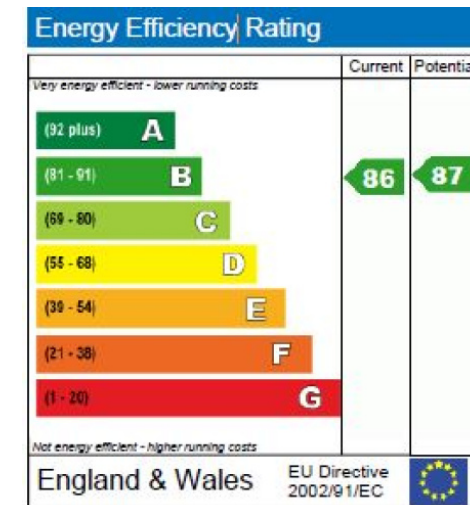
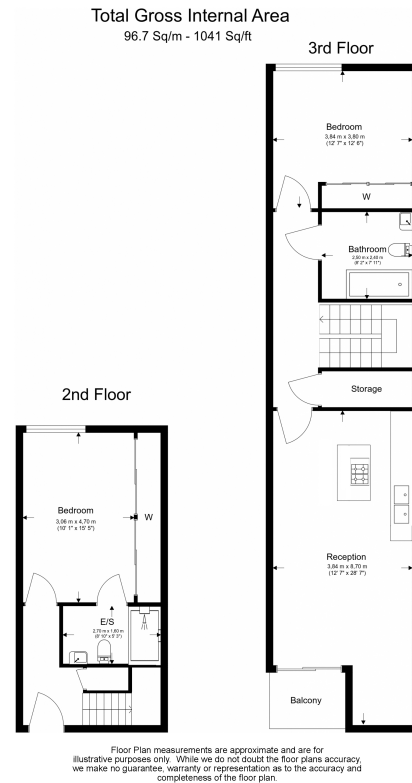
Benham&Reeves



Laycock Street, Highbury & Islington, N1

£969 per week, £4,199 per month + fees

www.benhams.com



London branches open six days a week Mon - Sat

Canary Wharf | City | Colindale | Dartmouth Park | Ealing | Fulham
Hammersmith | Hampstead | Highgate | Hyde Park | Kensington | Kew
Knightsbridge | Nine Elms | Shoreditch | Southall | Surrey Quays
Wapping | Wembley | White City | Woolwich

International offices

China | Hong Kong SAR | India | Indonesia | Qatar | Malaysia | Middle East |
Singapore | South Africa | Thailand | Turkey



Benham & Reeves