



Benham & Reeves

## **Drummond Way, Highbury, N1**

£808 per week, £3,500 per month + fees

 2 Bedrooms    2 Bathrooms    Furnished

A spacious split level 2nd floor apartment within a converted Victorian school development, moments from the amenities of Angel and Islington. The property is within walking distance to Highbury & Islington (Victoria) underground and Overground station. Allocated Parking Space available under separate negotiation.

Please [click here](#) for full detail

## Property features

**Two Double Bedrooms | Two Bathrooms | Open Plan Reception | Fully Fitted Modern Kitchen | Furnished | EPC-D | Separate Guest WC | Communal Gardens | 24Hr Concierge, Secured and Gated | Close to Highbury and Islington Stations**

For more information about this property,  
please call our Highgate branch on

**020 8341 2335**

Redress & Client Money Protection :

Benham and Reeves are members of The Property Ombudsman redress scheme and have Client Money protection with ARLA Propertymark. You can find more information on our website at <https://www.benhamandreeves.com/membership/>



**Benham & Reeves**



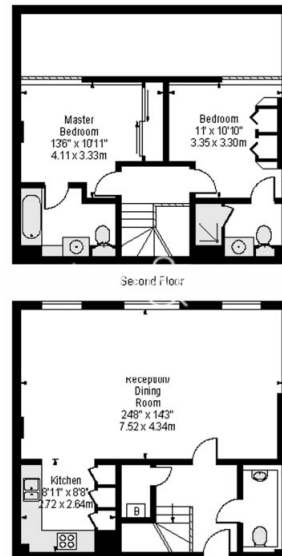
# Drummond Way, Highbury, N1

£808 per week, £3,500 per month + fees

www.benhams.com

2nd Floor

Approx gross internal area: 972sq/ft - 90sq/m



Whilst every attempt has been made to ensure the accuracy of the floor plan contained here, measurements of doors, windows, rooms and any other items are approximate and no responsibility is taken for any error, omission, or mis-statement. This plan is for illustrative purposes only and should be used as such by any prospective purchaser. The services, systems and appliances shown have not been tested and no guarantee as to their operability or efficiency can be given.  
Made with Metropix ©2016

Energy Efficiency Rating		
	Current	Potential
Very energy efficient - lower running costs		
(92-plus) <b>A</b>		
(81-91) <b>B</b>		
(69-80) <b>C</b>		
(55-68) <b>D</b>	<b>56</b>	<b>56</b>
(39-54) <b>E</b>		
(21-38) <b>F</b>		
(1-20) <b>G</b>		
Not energy efficient - higher running costs		
England & Wales		EU Directive 2002/91/EC

## London branches open six days a week Mon - Sat

Canary Wharf | City | Colindale | Dartmouth Park | Ealing | Fulham  
Hammersmith | Hampstead | Highgate | Hyde Park | Kensington | Kew  
Knightsbridge | Nine Elms | Shoreditch | Southall | Surrey Quays  
Wapping | Wembley | White City | Woolwich

## International offices

China | Hong Kong SAR | India | Indonesia | Qatar | Malaysia | Middle East |  
Singapore | South Africa | Thailand | Turkey



Benham & Reeves