



Benham & Reeves

Highbury Stadium Square, Highbury, N5

£750 per week, £3,250 per month + fees

 2 Bedrooms  2 Bathrooms  Unfurnished

UNFURNISHED. A smart apartment, with secure entry, situated within a landmark re- development conveniently located a short distance from Arsenal Tube station serviced by the Piccadilly line, which is three stops from King's Cross/St Pancras.

Please [click here](#) for full detail

Property features

2 Double Bedrooms | Reception Room | Fully Fitted Kitchen | 2 Bathrooms | Unfurnished | EPC-C | Private Balcony | Communal Gardens | 24 Hours Concierge | Nearby Arsenal Station

For more information about this property,
please call our Highgate branch on

020 8341 2335

Redress & Client Money Protection :

Benham and Reeves are members of The Property Ombudsman redress scheme and have Client Money protection with ARLA Propertymark. You can find more information on our website at <https://www.benhams.com/membership/>



Benham & Reeves

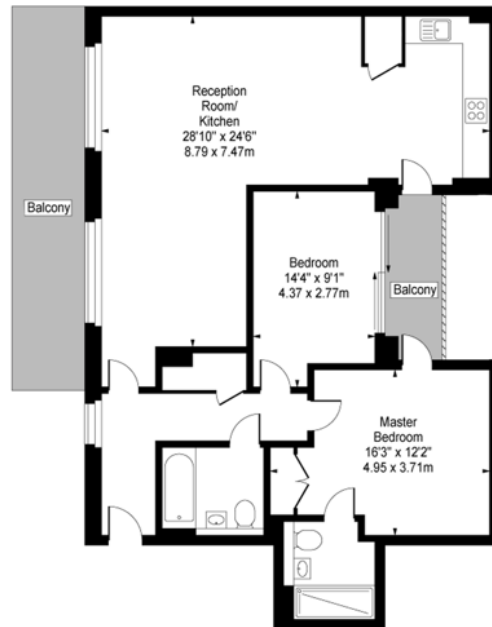


Highbury Stadium Square, Highbury, N5

£750 per week, £3,250 per month + fees

www.benhams.com

5th Floor
Approx gross internal area: 1032sq/ft - 96sq/m



| Energy Efficiency Rating | | |
|---|-------------------------|-----------|
| | Current | Potential |
| Very energy efficient - lower running costs | | |
| (92 plus) A | | |
| (81-91) B | | |
| (69-80) C | 78 | 81 |
| (55-68) D | | |
| (39-54) E | | |
| (21-38) F | | |
| (1-20) G | | |
| Not energy efficient - higher running costs | | |
| England & Wales | EU Directive 2002/91/EC | |

London branches open six days a week Mon - Sat

Canary Wharf | City | Colindale | Dartmouth Park | Ealing | Fulham
Hammersmith | Hampstead | Highgate | Hyde Park | Kensington | Kew
Knightsbridge | Nine Elms | Shoreditch | Southall | Surrey Quays
Wapping | Wembley | White City | Woolwich

International offices

China | Hong Kong SAR | India | Indonesia | Qatar | Malaysia | Middle East |
Singapore | South Africa | Thailand | Turkey

