



Benham & Reeves

Highbury Stadium Square, Highbury, N5

£465 per week, £2,015 per month + fees

🛏️ 1 Bedroom 🚿 1 Bathroom 🛋️ Furnished

A well-presented 2nd floor apartment set within a highly sought after development with a two-acre garden, close to the amenities of Islington. The property is moments away from Arsenal (Piccadilly Line) underground station.

Please [click here](#) for full detail

Property features

1 Bedroom | 1 Luxury Bathroom | 1 Open Plan Reception | Fitted Modern Kitchen | Furnished | EPC-B | 24/7 Hour Concierge, Lift | Communal Gardens | Walking Distance to Arsenal and Drayton Park Stations

For more information about this property, please call our Highgate branch on

020 8341 2335

Redress & Client Money Protection :

Benham and Reeves are members of The Property Ombudsman redress scheme and have Client Money protection with ARLA Propertymark.

You can find more information on our website at <https://www.benhamandreeves.com/membership/>



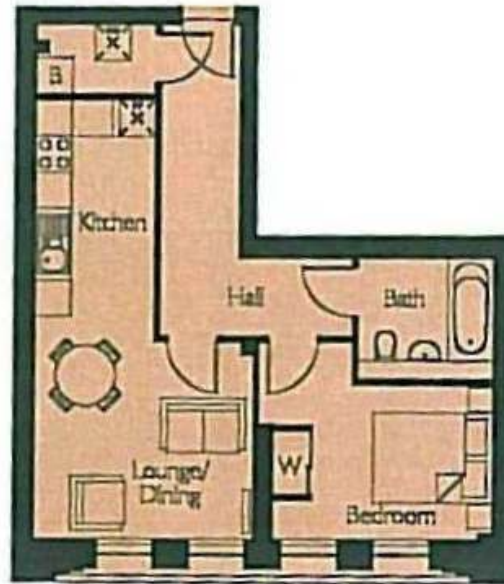
Benham&Reeves



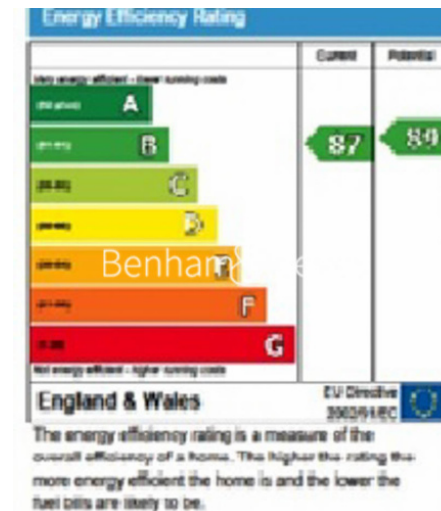
Highbury Stadium Square, Highbury, N5

£465 per week, £2,015 per month + fees

www.benhams.com



Lounge/Dining	3650mm x 3266mm	11'11" x 10'8"
Kitchen	4030mm x 1915mm	13'2" x 6'3"
Bedroom	3900mm* x 3266mm*	12'9" x 10'8"
Area	47.8 m ²	514.5 sq.ft



London branches open six days a week Mon - Sat

Canary Wharf | City | Colindale | Dartmouth Park | Ealing | Fulham
Hammersmith | Hampstead | Highgate | Hyde Park | Kensington | Kew
Knightsbridge | Nine Elms | Shoreditch | Southall | Surrey Quays
Wapping | Wembley | White City | Woolwich

International offices

China | Hong Kong SAR | India | Indonesia | Qatar | Malaysia | Middle East | Pakistan
Singapore | South Africa | Thailand | Turkey



Benham & Reeves