



Benham & Reeves

Highbury Stadium Square, Highbury, N5

£508 per week, £2,201 per month + fees

 1 Bedroom  1 Bathroom  Furnished

Immaculate, designer furnished, 2nd floor apartment situated in a landmark development

Please [click here](#) for full detail

Property features

One Double Bedroom | One Bathroom | Open Plan Kitchen Reception Room | Modern Fitted Kitchen | Underfloor Heating | EPC-B | Beautifully Maintained Communal Garden | 24/7 Concierge | Gym And Swimming Pool Onsite (Membership Required For Both) | Walking Distance To Arsenal And Drayton Park Stations

For more information about this property,
please call our Highgate branch on

020 8341 2335



Redress & Client Money Protection :

Benham and Reeves are members of The Property Ombudsman redress scheme and have Client Money protection with ARLA Propertymark. You can find more information on our website at <https://www.benhams.com/membership/>

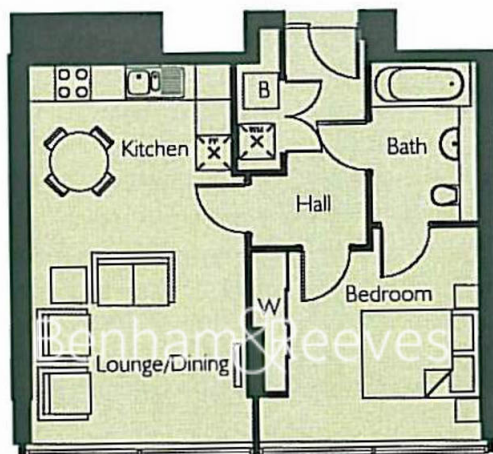
Benham & Reeves




Highbury Stadium Square, Highbury, N5

£508 per week, £2,201 per month + fees

www.benhams.com



Kitchen	3450mm x 1800mm	11'3" x 5'10"
Lounge/Dining	4650mm x 3800mm*	15'3" x 12'5"*
Bedroom 1	3800mm* x 3635mm*	12'5" x 11'11"*
Area	50.6 m2	544.6 sq.ft

Energy Efficiency Rating		
	Current	Potential
Very energy efficient - lower running costs		
(92-plus) A		
(81-91) B	86	87
(69-80) C		
(55-68) D		
(39-54) E		
(21-38) F		
(1-20) G		
Not energy efficient - higher running costs		
England & Wales		EU Directive 2002/91/EC 

London branches open six days a week Mon - Sat

Canary Wharf | City | Colindale | Dartmouth Park | Ealing | Fulham
Hammersmith | Hampstead | Highgate | Hyde Park | Kensington | Kew
Knightsbridge | Nine Elms | Shoreditch | Southall | Surrey Quays
Wapping | Wembley | White City | Woolwich

International offices

China | Hong Kong SAR | India | Indonesia | Qatar | Malaysia | Middle East | Pakistan
Singapore | South Africa | Thailand | Turkey



Benham & Reeves